



Shenzhen Lejin radio frequency technology Co., LTD

SPECIFICATIONS FOR APPROVAL

Customer Name: Anhui Upin intelligent Technology Co., Ltd

Product Name: WIFI (2G+5G)_AUX_ANT

Product Model: R1529

Part Number: LJF02-230210001A-R0A

Write By : Star_Li

Issued Date: 2023/6/1

Antenna manufacturer: Shenzhen Lejin radio frequency technology Co., LTD

CUSTOMER

ENGINEER R&D DEPT	BUSSINESS DEPT	APPROVED BY	DATE	Edition/Part number

LEJIN

R&D DEPT	ENGINEER R&D DEPT	APPROVAL	DATE	Edition/Part number

ECN/ECR			



Index

- 1、 (Cover)
- 2、 (Index)
- 3、 (Product Specification)
- 4、 (Test Equipment & Conditions)
- 5、 (Test Report)
- 6、 (Antenna Picture)
- 7、 (Product Drawing)

Electrical Characteristics

Frequency	VSWR	Efficiency	Impedance	Polarization	Gain
2400 MHz ~2500 MHz	<2	>35%	50 Ohm	Linear	≥ 1 DB
5100MHZ--5900 MHZ	<2.5	>40%	50 Ohm	Linear	≥ 1 DB

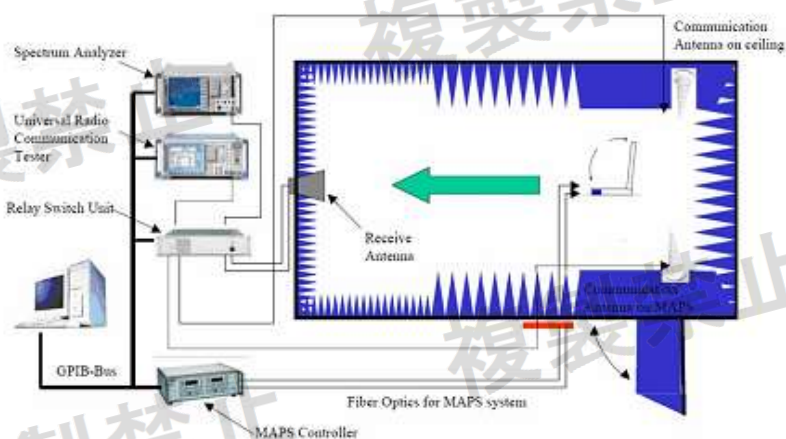
Material & Mechanical Characteristics

Environmental

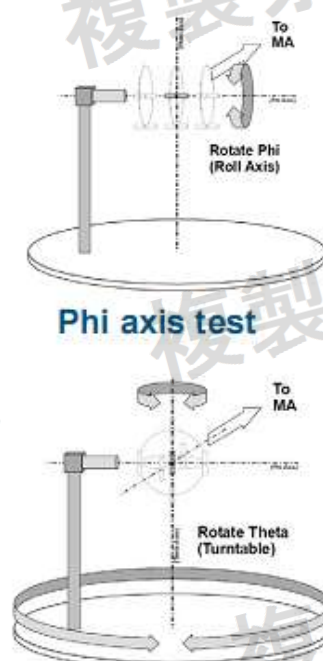
Material of Radiator	Cable Type	Connector Type	Dimension	Operation Temperature	Storage Temperature
FPC black/YELLOW	113	KCC451		- 20 °C ~ + 50 °C	- 30 °C ~ + 80 °C

Test Equipment & Conditions

1. Network Analyzers :Agilent 8753SE 5071C
2. Communications Test Set:Agilent E5515C/CMW500
3. 3D Chamber Test System(ETS743)



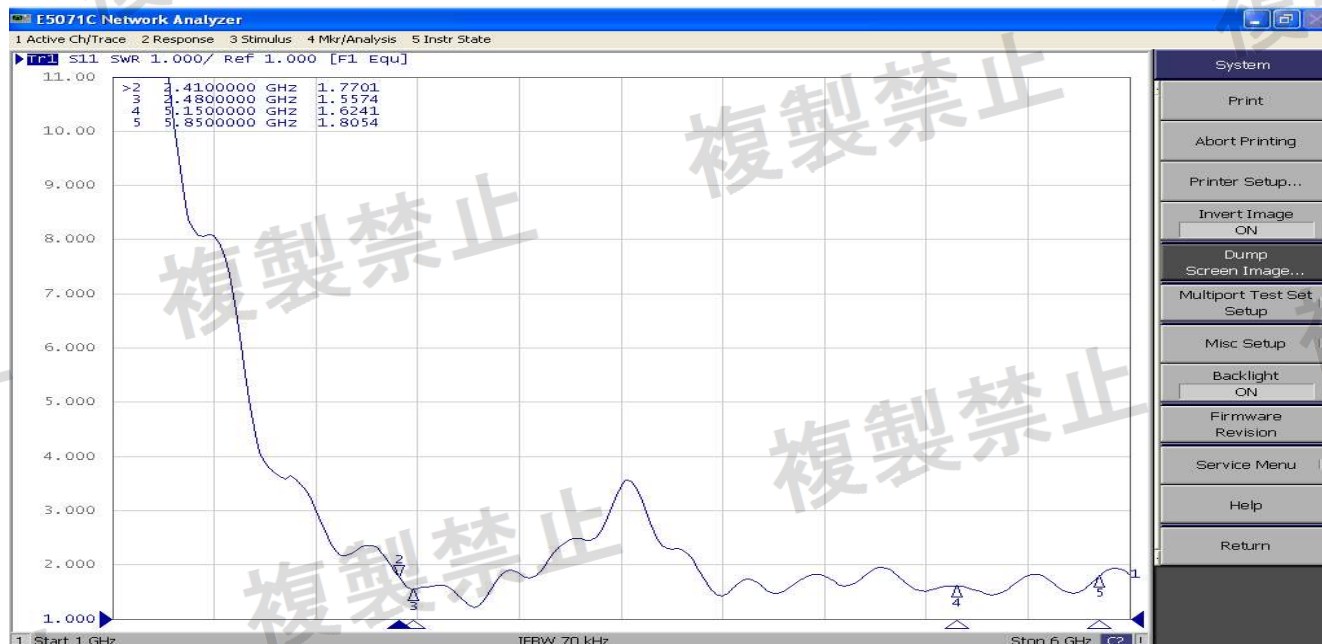
(Testing by 3D anechoic chamber)



Theta axis test



Antenna Impedance: WIFI ANT M:



2.4GWIFI/BT	Freq (MHz)	2400	2410	2420	2430	2450	2460	2470	2480	2490	2500	ANT A
	Effi (%)	32.77	30.35	31.22	33.54	33.21	34.5	30.58	30.65	33.78	32.98	
	Gain (dBi)	2.07	1.82	2.08	2.27	2.21	2.21	1.88	1.87	2.08	1.99	
5G WIFI	Freq (MHz)	5150	5250	5350	5450	5550	5650	5750	5850	5950	6000	ANT A
	Effi (%)	40.35	40.57	41.24	39.98	40.58	41.33	38.37	39.56	41.25	42.56	
	Gain (dBi)	2.49	2.27	2.33	2.04	2.17	2.23	2.01	2.05	2.74	2.81	

OTD_DATA:

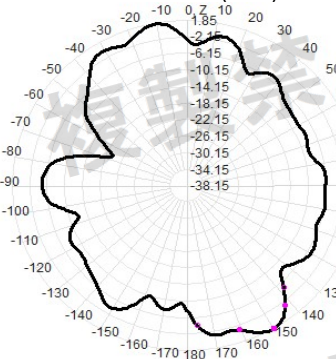
2.4G 802.11.B @11Mbit		
Frequency	TRP (dBm)	TIS (dBm)
1 (2412MHz)	13.11	-84.61
6 (2437MHz)	13.57	-83.5
13 (2472MHz)	13.61	-84.55

5G 802.11 A @MC54		
Frequency	TRP (dBm)	TIS (dBm)
36 (5180MHz)	14.5	-72.35
60 (5300MHz)	14.72	-71.89
161 (5805MHz)	13.88	-71.47

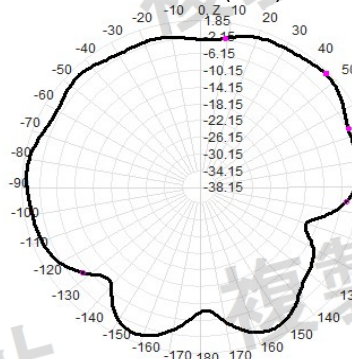
2450.0MHz H+V, Eff: 33.2%



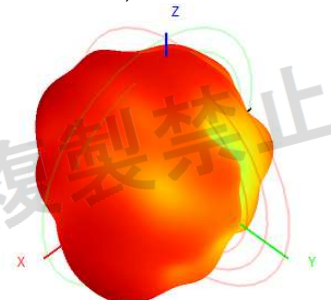
2450.0MHz Total(E1-XZ)



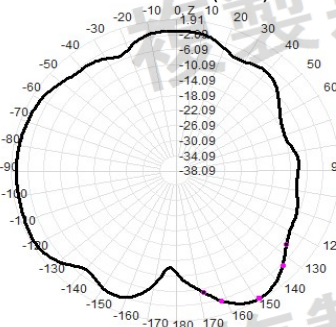
2450.0MHz Total(E2-YZ)



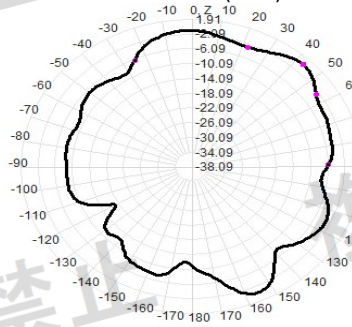
5550.0MHz H+V, Eff: 40.58%



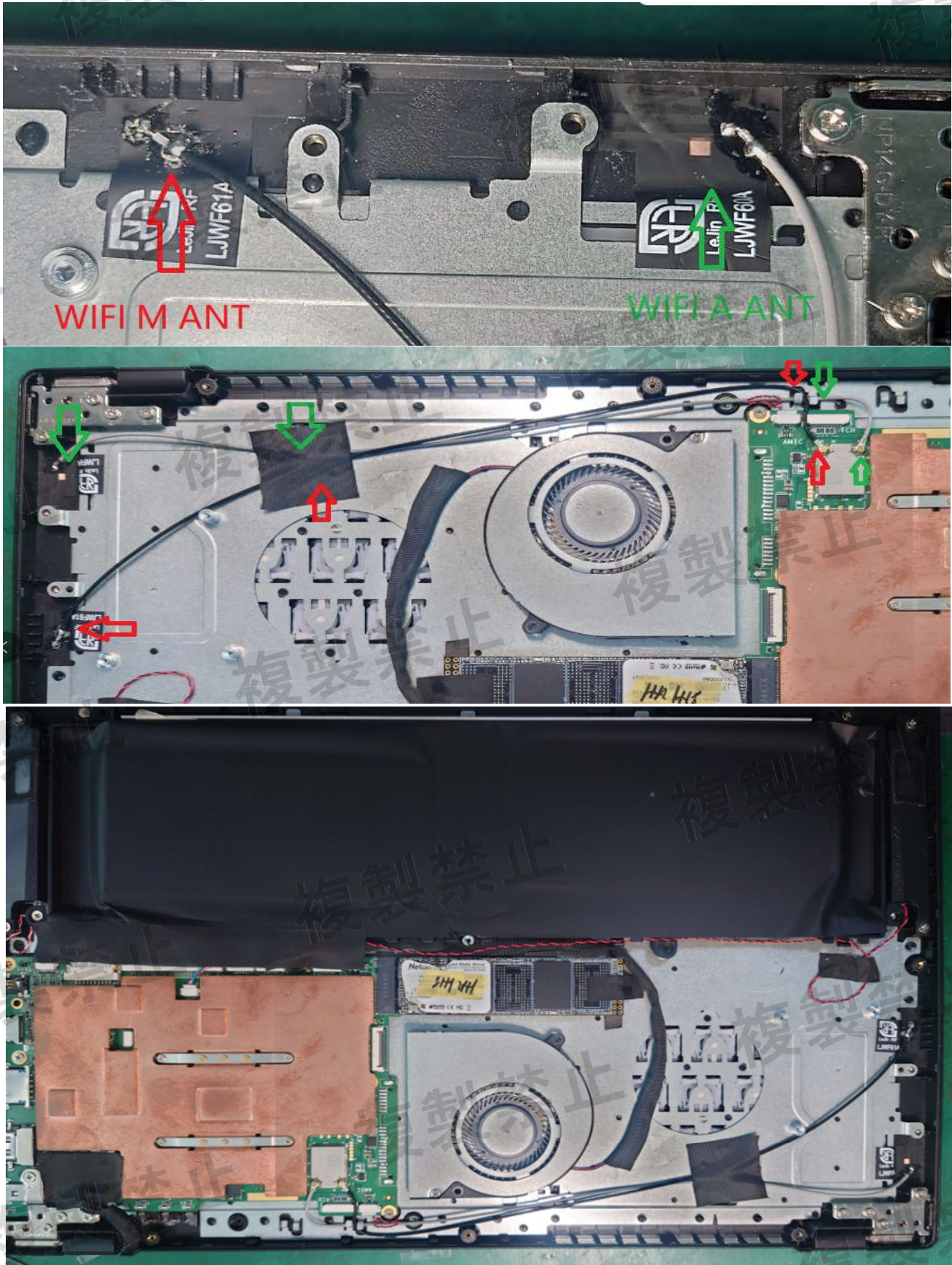
5550.0MHz Total(E1-XZ)



5550.0MHz Total(E2-YZ)



Requirements and instructions for antenna installation and process processing:



Product Drawing:

[illegible]