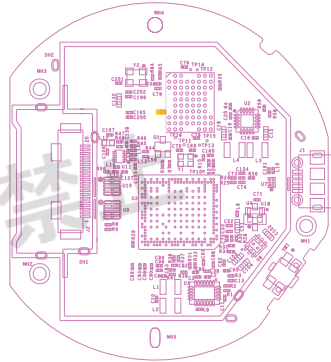
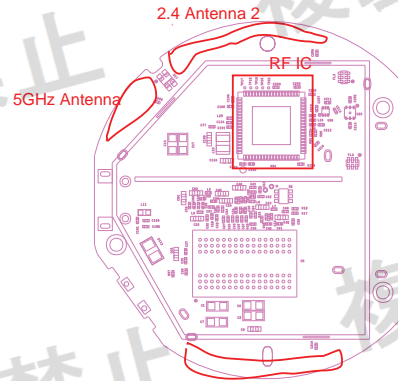


REVISIONS			
REV	DESCRIPTION	DATE	APPROVED




TOP VIEW



BOTTOM VIEW

NOTES: Unless otherwise specified,

1. The printed circuit assembly workmanship shall meet the requirements of Acceptability of Electronic Assembly IPC-A-610, class II, latest revision.
2. Square pad or dot indicates pin 1 of devices, + end of capacitor, cathode end of diode or emitter or transistor and pin 1 of connector.
3. Reference placement file for all component locations. In case of discrepancies between the placement file and the assembly drawing, the placement file takes precedence.
4. Use no-clean process. Aqueous cleaning is prohibited.
5. Printed circuit board assembly process and materials used must be compliant with the restriction on use of Hazardous Substances (RoHS) Directive.
6. Place a 2.0" x 0.25" barcode label with assembly part number/revision and serial number at dedicated silkscreen block.

UNLESS OTHERWISE SPECIFIED DIMENSIONS ARE IN MM TOLERANCES ON: 2 PL DECIMALS +/- .13 3 PL DECIMALS +/- .076 ANGLES +/- 5°	SIGNATURES	DATE		
	DRAWN G. PIKOVSKY	2/27/15		
	CHECKED		ASSEMBLY DRAWING EARTH EVT1	
	ENG'D M. ALOU			
	ISSUED		SIZE	
			D	
			FSCM NO	
			DWG NO	
SCALE		NONE		
SHEET		1 of 1	REV	02