

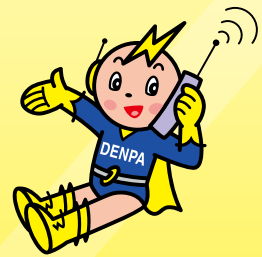
Attention Visitors to Japan

In order to use **Wi-Fi** or **Bluetooth** devices in Japan, they must conform to Japanese technical standards and **include a mark (Figure 1) certifying that they do.**

Figure 1:
Technical conformity mark



However, when the device conforms to the following requirements, they are exempt from this rule and may be used for **90 days** after entering Japan.



Wi-Fi Device Exceptions

The device has the Wi-Fi logo (Figure 2), which shows it conforms to international technical standards, and the following apply:

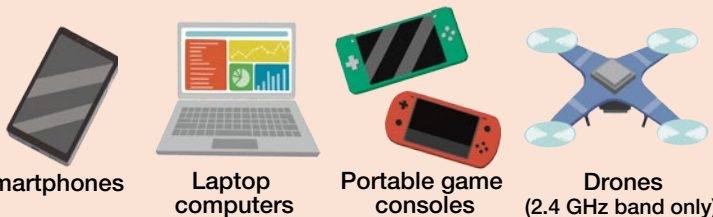
- ◆The device is accessing a free public wireless LAN spot (access point).
- ◆It connects to a smartphone or other device via tethering.*
- ◆The two devices directly communicate with each other.*

*This is limited to situations when 2.4 GHz or 6 GHz band VLP mode is used.

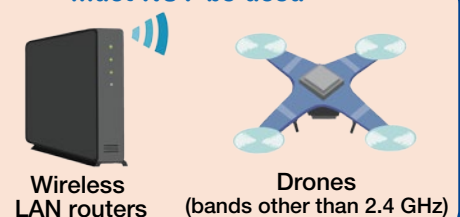
Figure 2: Wi-Fi logo



○ Examples of devices that MAY be used



✗ Examples of devices that must NOT be used



Bluetooth Device Exceptions

A device with the Bluetooth logo (Figure 3), which shows it conforms to international technical standards

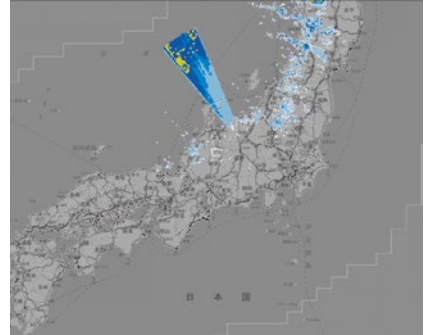
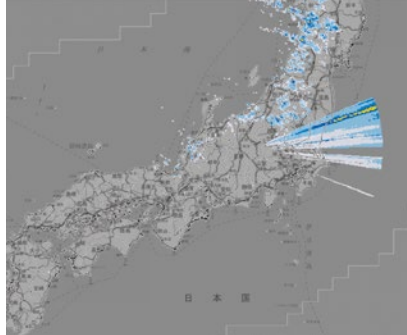
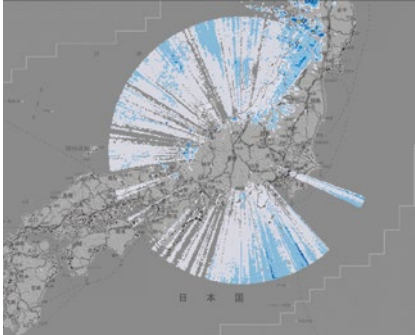
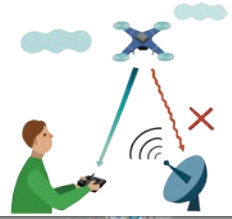
○ Examples of devices that MAY be used



Figure 3: Bluetooth logo



⚠ Using devices that do not conform to the Japanese technical standards, or are manufactured overseas and do not fall under the exceptions mentioned on the reverse side of this leaflet, can interfere with vital Japanese wireless stations, and hinder their operation.



Examples of interference (weather radar)

Notice

Since December 2023, **even some 6 GHz band wireless LAN devices now fall under the 90-day usage-exception rule in Japan.**

Examples of foreign devices that may be used in Japan (after the December 2023 revision)	Frequency band ^{*1}					
	2.4 GHz band	5.2 GHz band	5.3 GHz band	5.6 GHz band	6 GHz band	
					VLP	LPI
○ Connecting to domestic Wi-Fi spots 	○	○	○	○	○	○
○ Tethering via smartphone or pocket Wi-Fi 	○	×	×	×	○	×
○ Direct communication with smartphone 	○	×	×	×	○ ^{*2}	×

Added to exceptions

*1: Each frequency band refers to 2.4 GHz (2,400-2,483.5 MHz), 5.2 GHz (5,150-5,250 MHz), 5.3 GHz (5,250-5,350 MHz), 5.6 GHz band (5,470-5,730 MHz), and 6 GHz band (5,925-6,425 MHz).

*2: When two devices directly communicate with each other via 6 GHz band VLP, one of the devices must be a smartphone.

▶ For details, please visit the Ministry of Internal Affairs and Communications, The Radio Use website



<For further details and inquiries on this system>