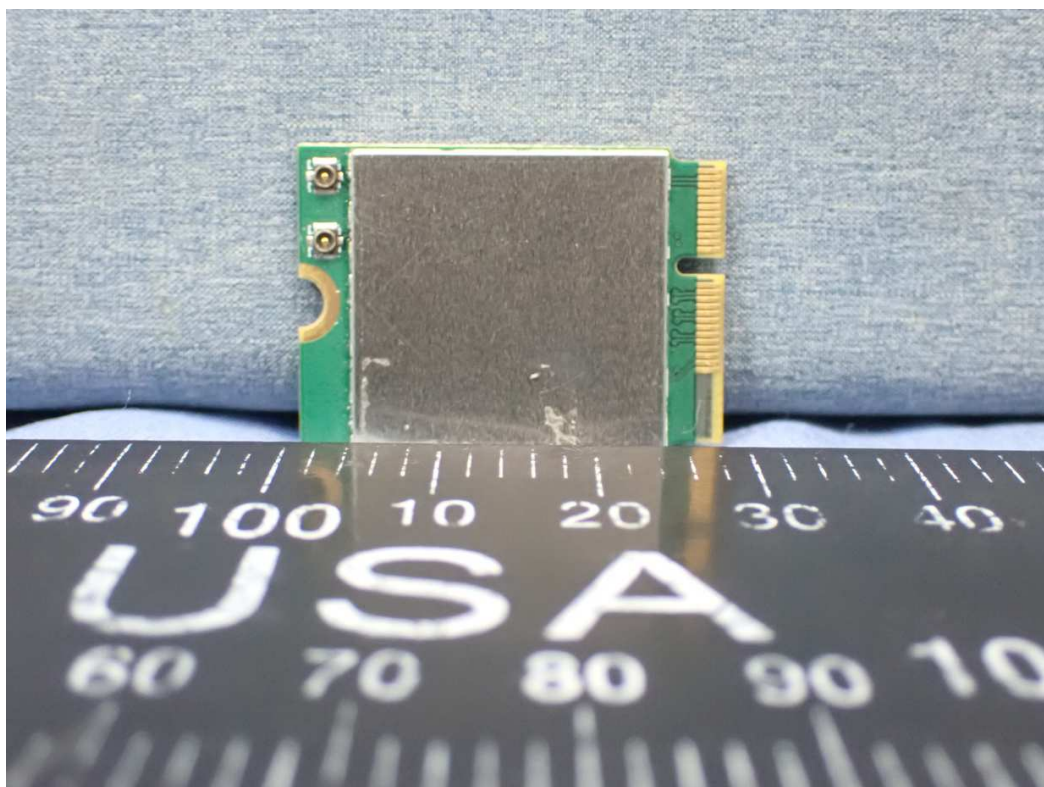
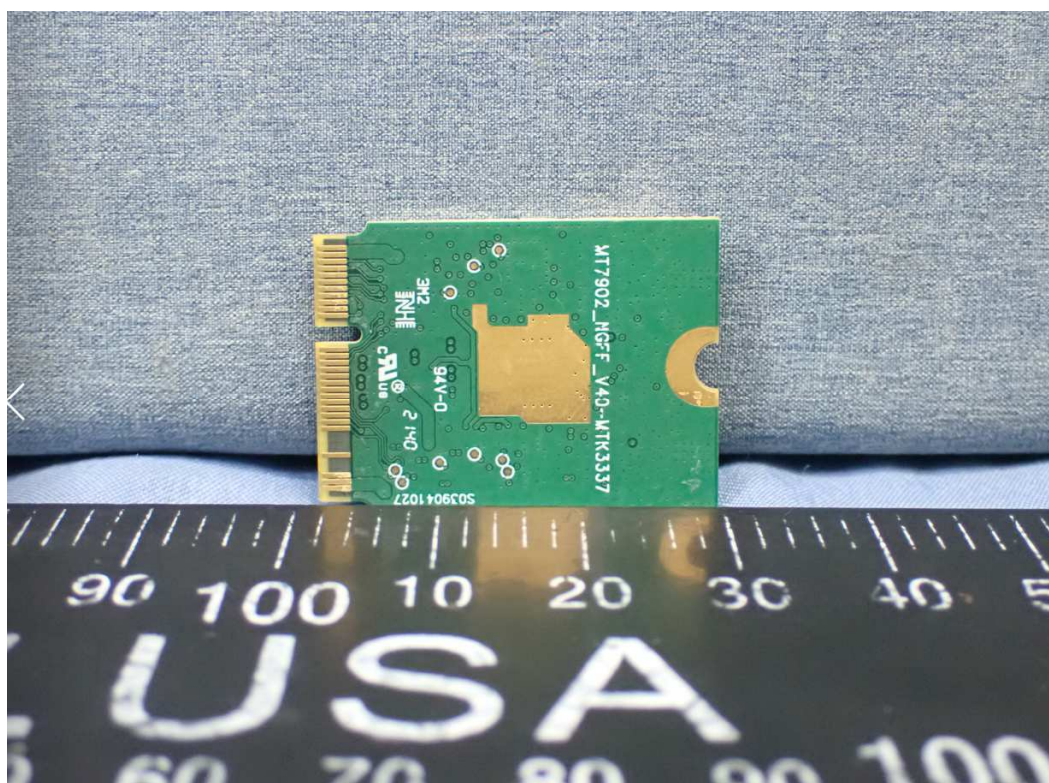


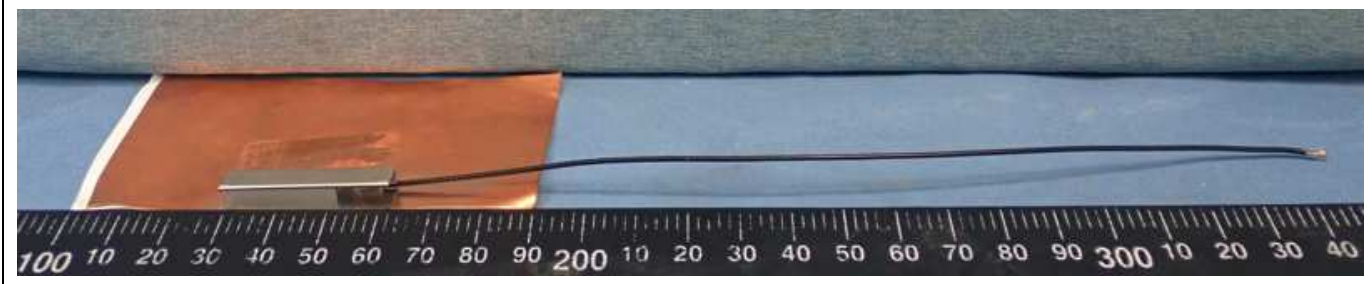
EUT 外觀照 01



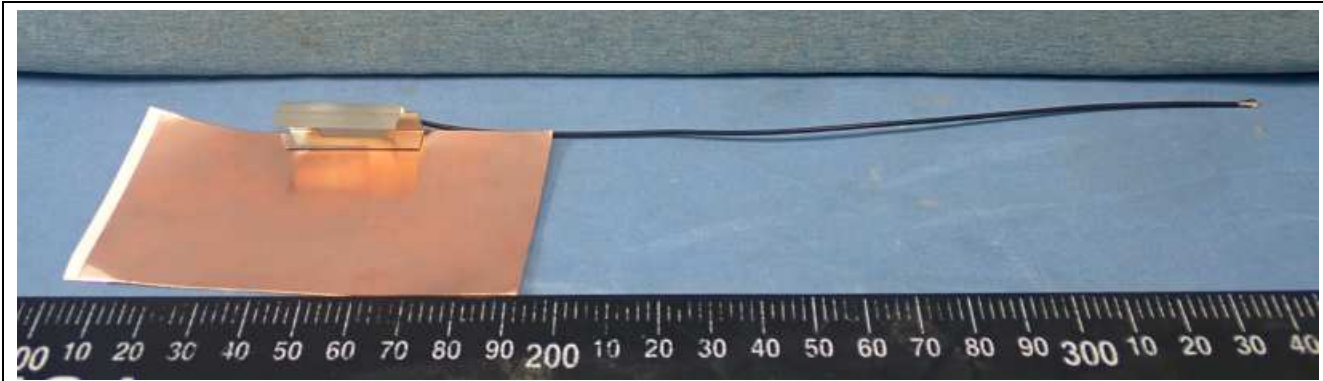
EUT 外觀照 02



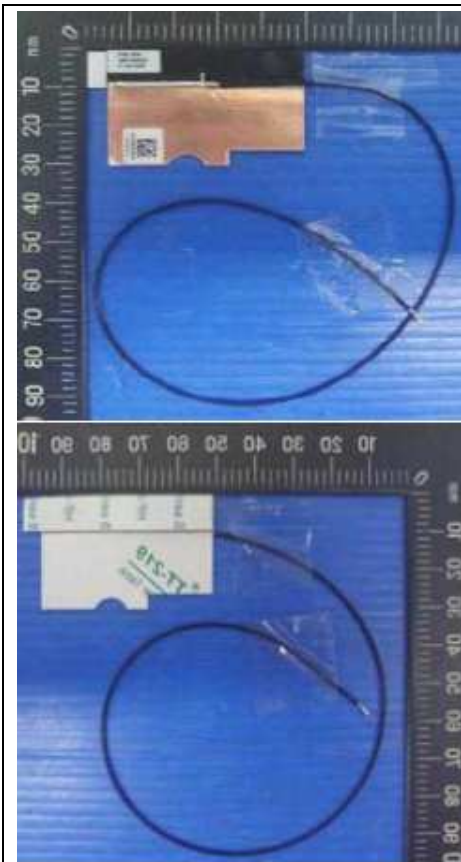
Antenna 1. PSA-RFMTA340718EMLB302



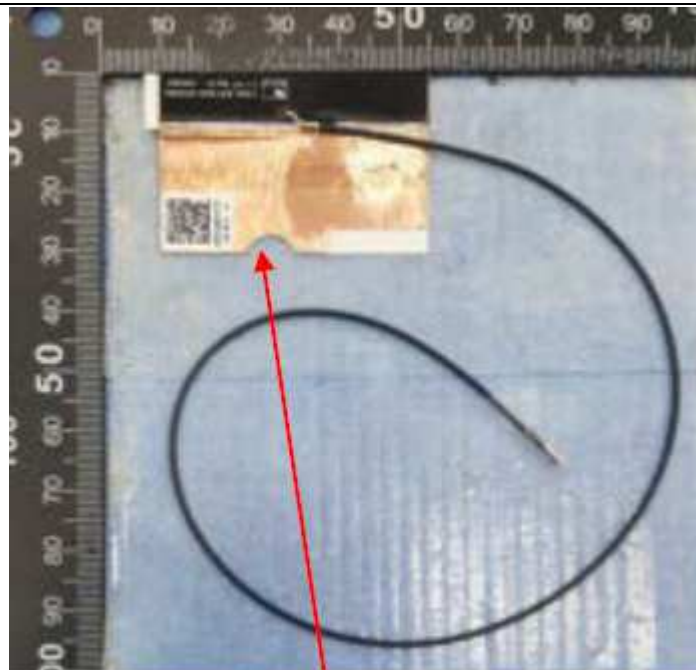
Antenna 2. PSA-RFMTA311020EMMB301



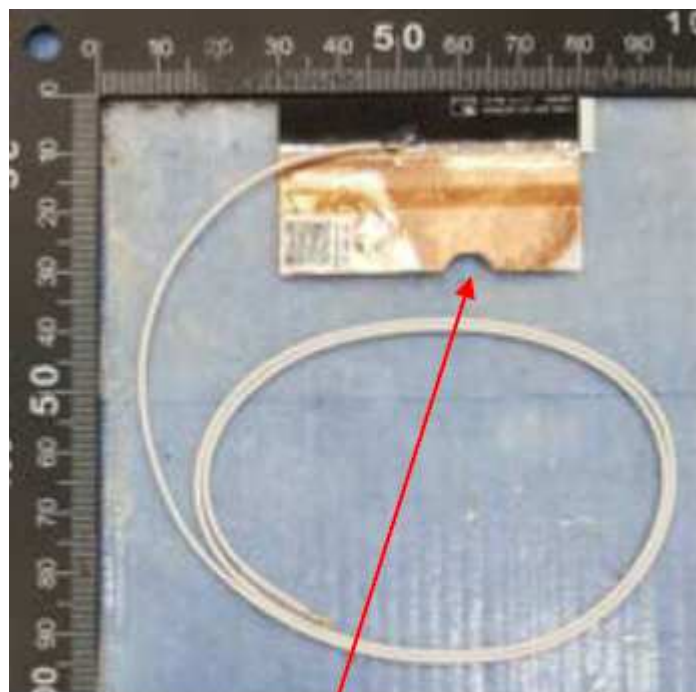
Antenna 3. LUXSHARE-ICT-LA9RF361-CS-H, LA9RF362-CS-H



Antenna 4. AWAN-AYF6Y-100190, AYF6Y-100191

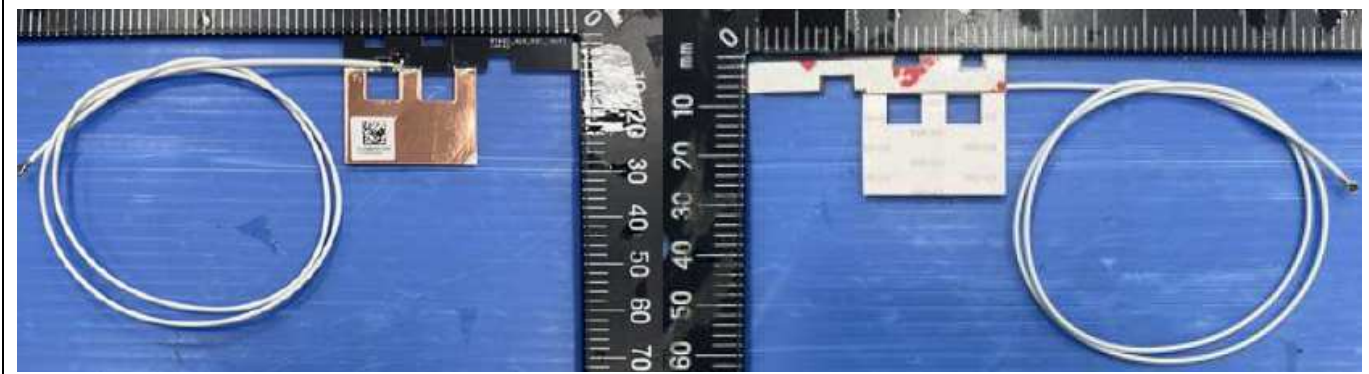


WLAN Main P/N : AYF6Y-100190

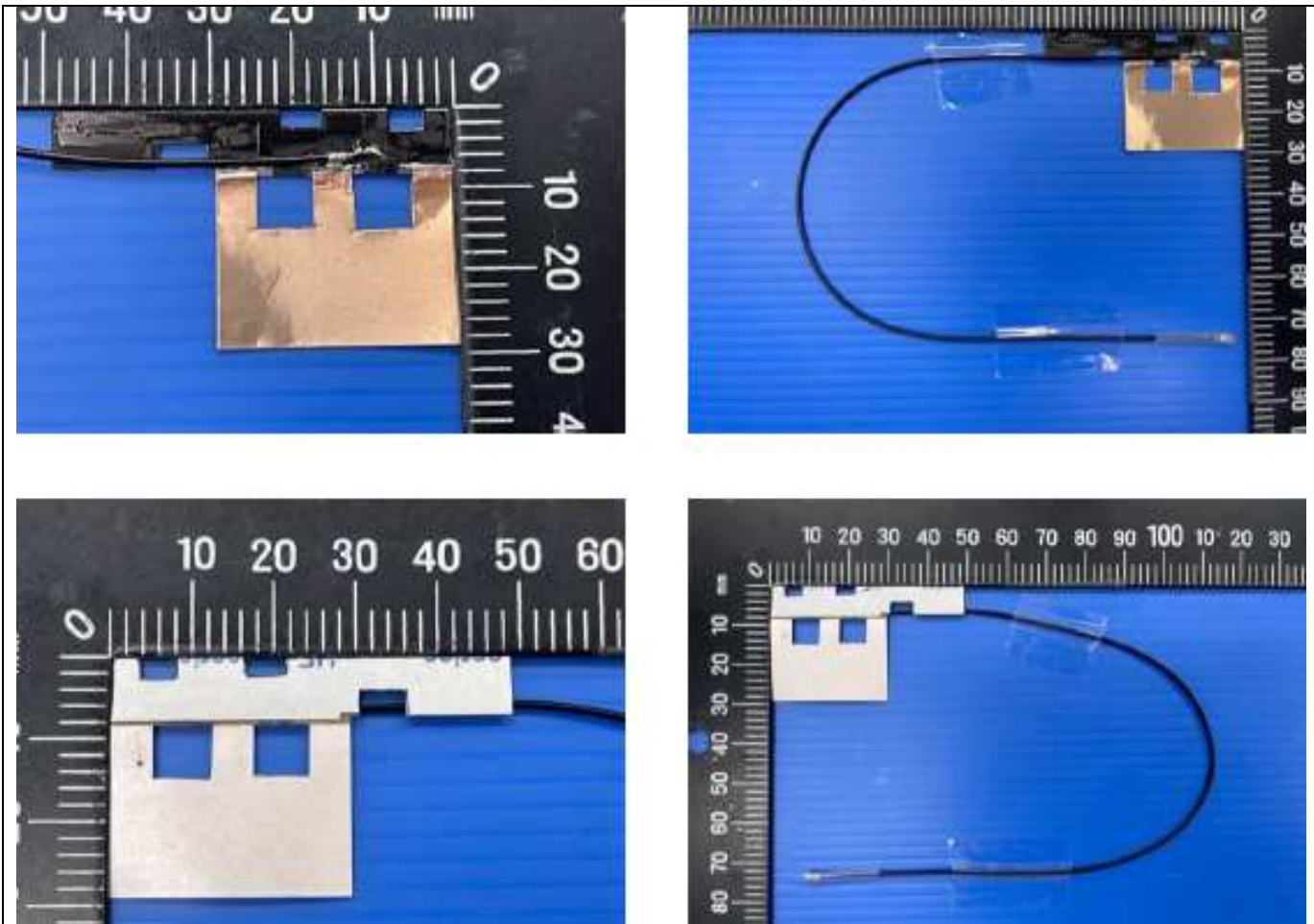


WLAN Aux P/N : AYF6Y-100191

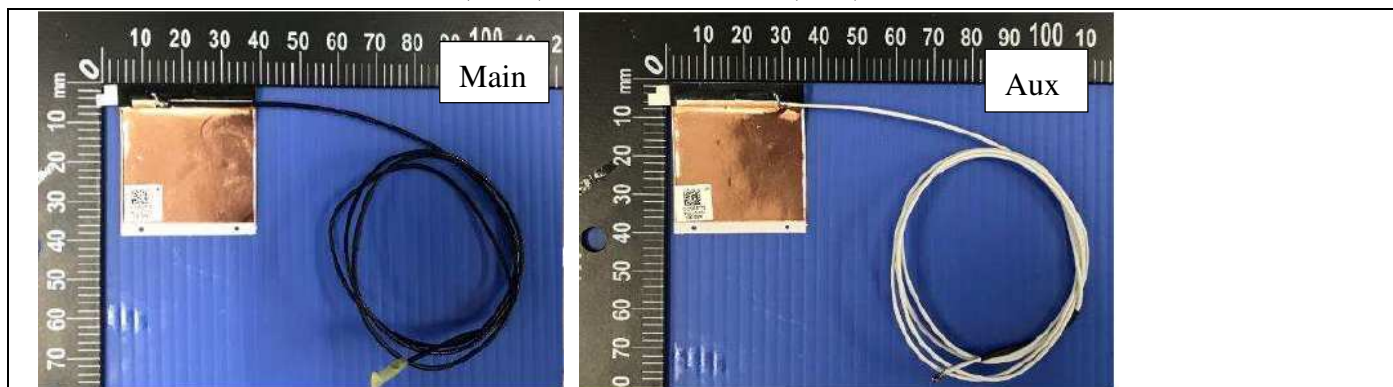
Antenna 5. INPAQ Corporation-WA-P-LE-02-064, WA-P-LE-01-006



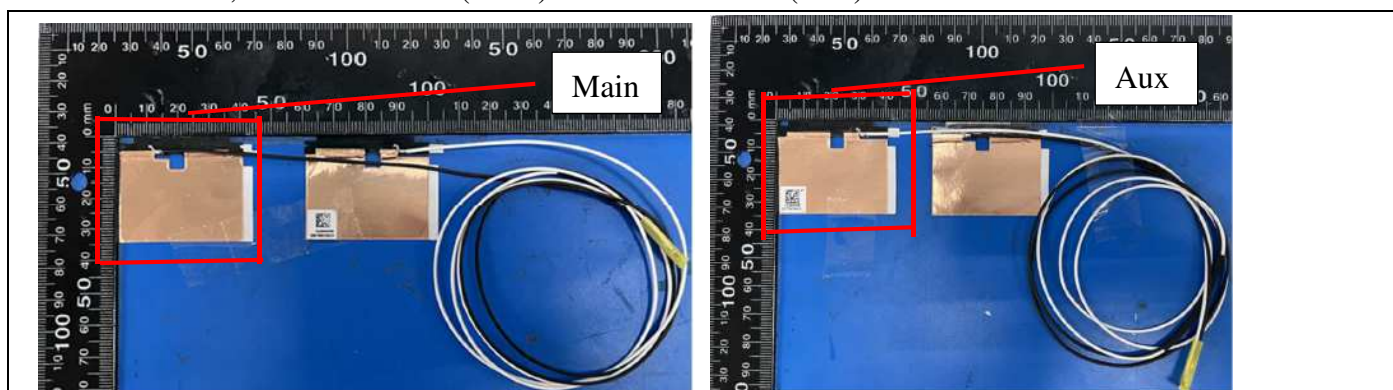
Antenna 6. PULSE-TZ20921, TZ20924



Antenna 7. WNC, 81EABU15.G37(Main)&81EABU15.G38(Aux)



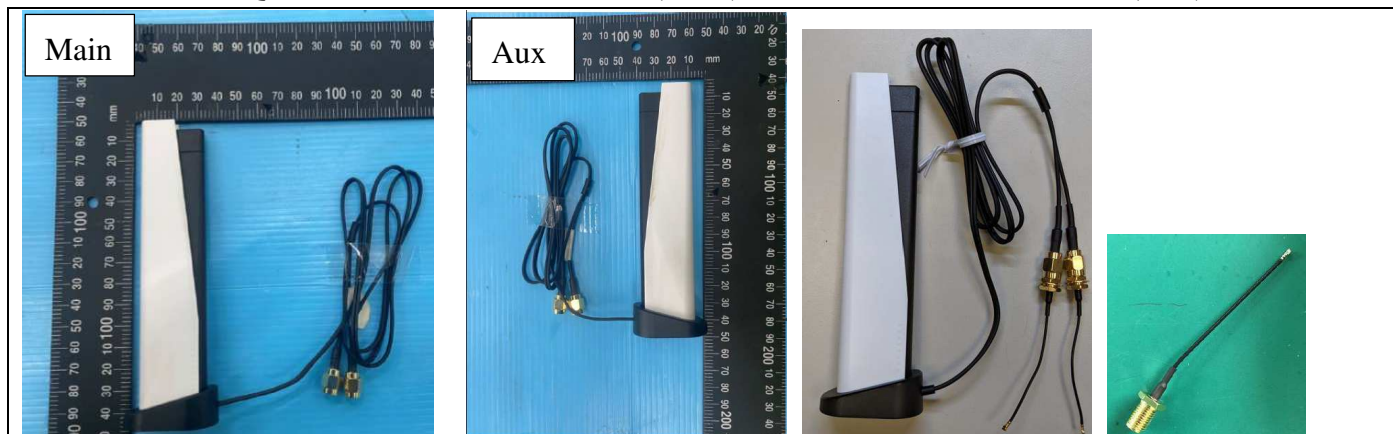
Antenna 8. WNC, 81EABU15.G53(Main)&81EABU15.G53(Aux)



Antenna 9. INPAQ , DAM-J8-K1-DB-800-10-25(Main)&DAM-J8-K1-DB-800-10-25(Aux)



Antenna 10. INPAQ , DAM-J9-K1-DB-800-10-70(Main)&DAM-J9-K1-DB-800-10-70(Aux)



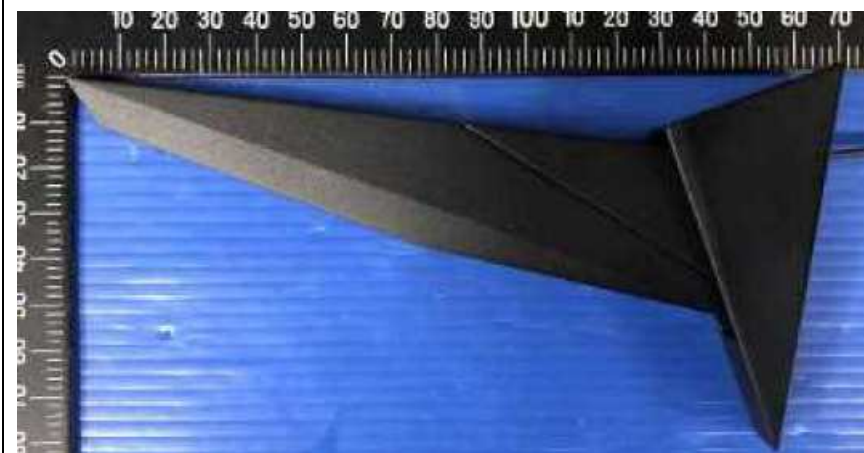
Antenna 11. Cortec-AN2450-4902BRS



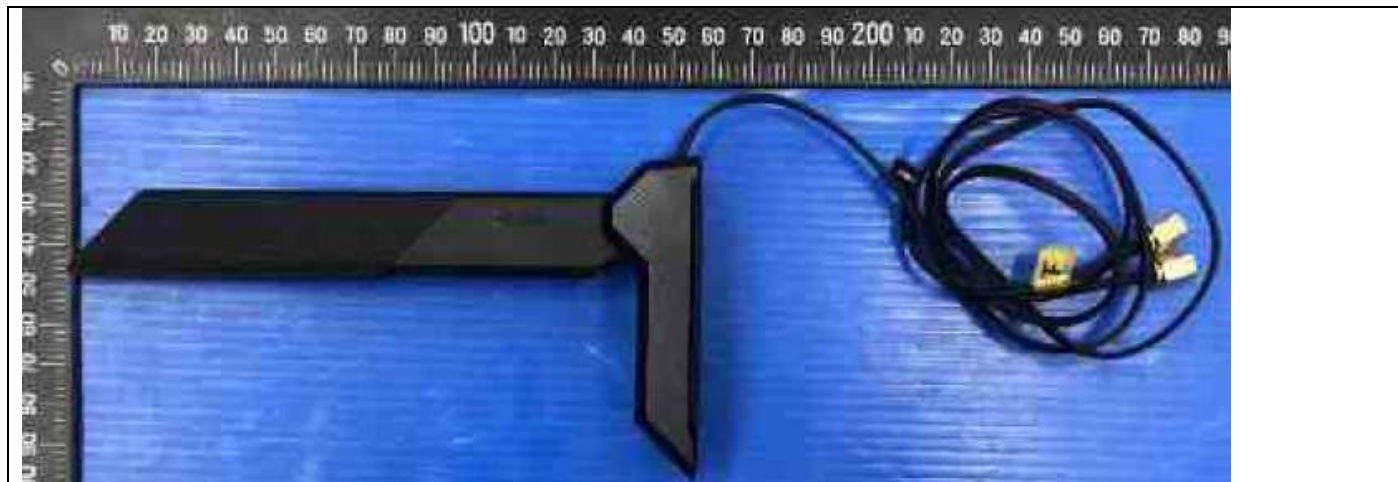
Antenna 12. ASUS-14008-02650000



Antenna 13. ASUS-14008-02650400

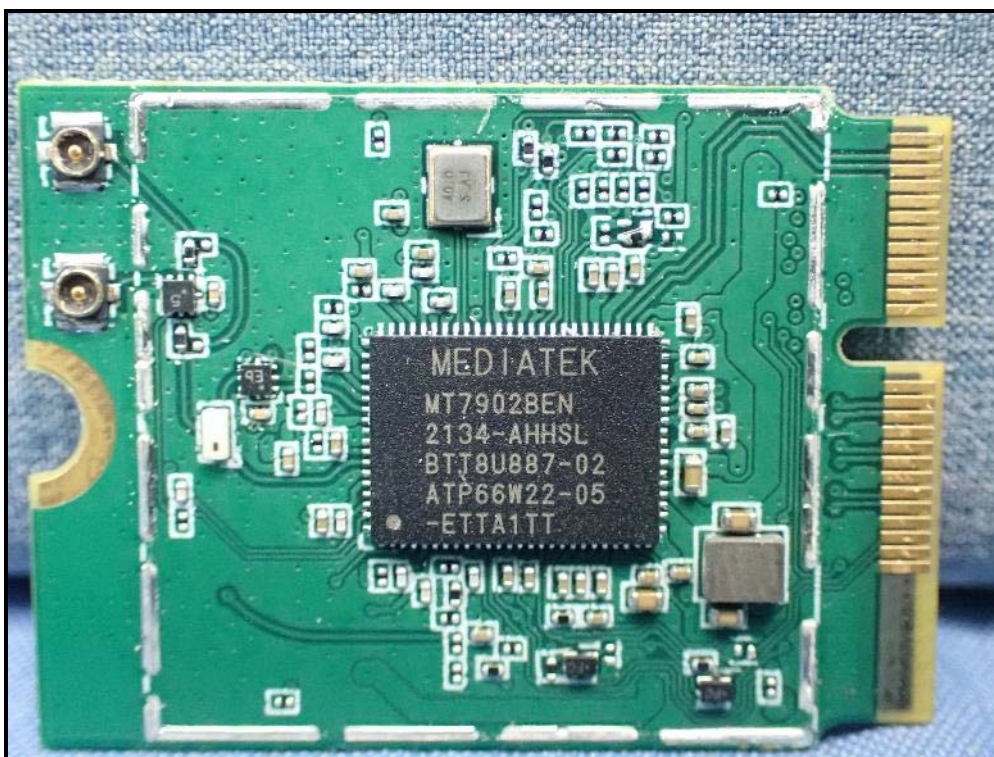


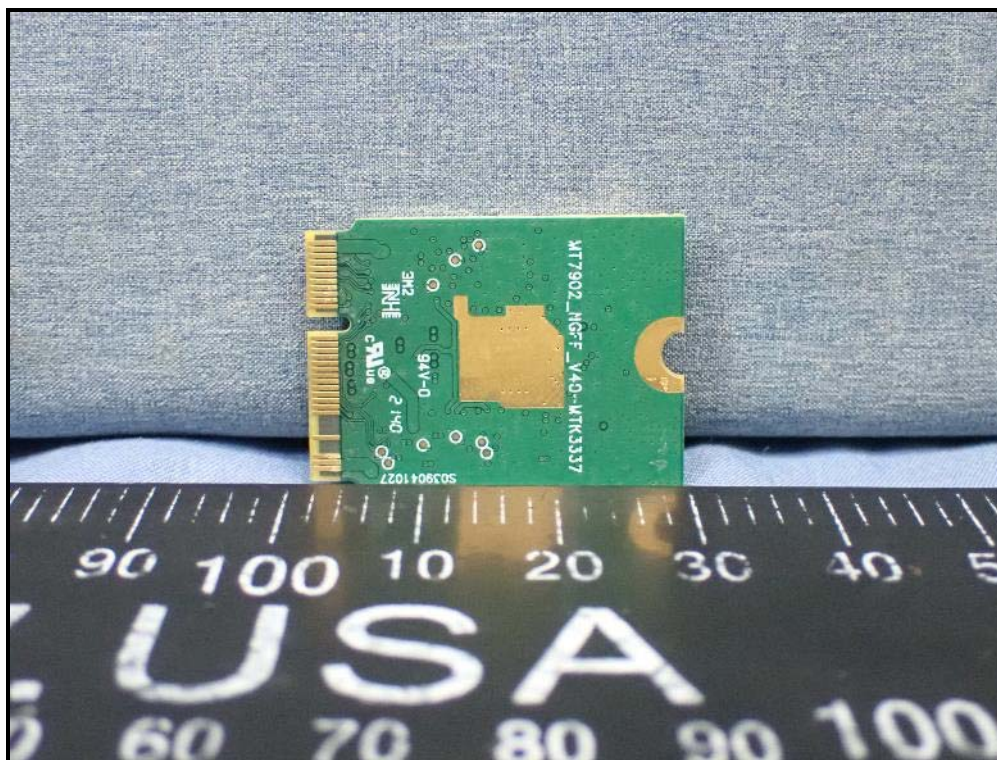
Antenna 14. ASUS-14008-02650600



CONSTRUCTION PHOTOS OF EUT

Diversity version A





Diversity version B

