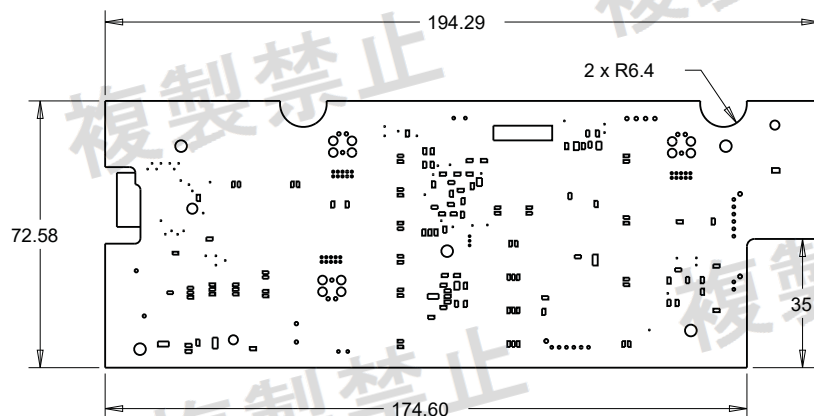


D

DWG NAME:	WSA3252
TOOL ID:	N/A
THIS DOCUMENT AND THE INFORMATION DISCLOSED HEREIN OR HEREWITH IS CONFIDENTIAL AND IS NOT TO BE DISCLOSED IN WHOLE OR IN PART TO ANYONE WITHOUT THE PERMISSION OF ABGIL.	

RF IC and Antenna



## NOTES:

1. NO CHANGES ARE TO BE MADE TO COMPONENTS OR PROCESSES WITHOUT WRITTEN APPROVAL FROM ABGIL.
2. ALL DIMENSIONS IN mm.
3. EACH UNIT AND SHIPPING CARTON TO BE LABELED PER CURRENT ABG SPECIFICATION MLA1012 WITH THE PROCESS OPTION LETTER AS "A" FOR NEW PRODUCTION AND "R" FOR ABG AUTHORIZED REWORK. THE SUPPLIER CODE TO BE "D".
4. PCBA MUST CONFORM TO LATEST WORKMANSHIP STANDARD ANSI/IPC-A-610-B CLASS 2.
5. PCBs TO BE SEPARATED WITH NO BROKEN OR DAMAGED COPPER TRACES.
6. REFER TO COMPONENTS FOR SPECIFICATIONS AND REQUIREMENTS.
7. 'QC PASSED' LABEL TO BE APPLIED INDICATING PASSING OF FINAL FUNCTION TEST.
8. TEST PROGRAM REVISION LEVEL:2
9. APPROVED SOURCE: COMPUTIME DG.
10. SOFTWARE REVISION LEVEL: TBD
11. REFERENCE ATTACHED BOM (AS PDF) FOR COMPONENTS, LATEST REVISION LEVEL, APPROVED SUPPLIER(S). BOM CAN BE FOUND LINKED TO PDF FILE
12. REFERENCE ATTACHED SCHEMATIC (AS PDF) FOR LAYOUT DETAIL.
13. ATTACHED (AS PDF) IS THE EEPROM/ FLASH MEMORY MAP DETAILS. THIS DETAILS THE PROGRAM LOGIC FOR RETAINING UNIT USAGE DATA.
14. EACH PCBA TO BE IN AN ANTI-STATIC BAG. MASTER CARTON TO BE DESIGNED BY SUPPLIER AND APPROVED BY ABGIL.
15. PCBA MUST CONFORM TO LATEST ABGIL CONFORMANCE CHECKLIST CS1005
16. PART TO BE COMPLIANT TO CURRENT EUROPEAN UNION DIRECTIVE - RESTRICTION OF HAZARDOUS SUBSTANCES (RoHS), AS CURRENTLY EFFECTIVE ASN AS SUBSEQUENTLY REVISED OR AMENDED. SUPPLIER TO PROVIDE DOCUMENTATION THAT MUST REMAIN ON FILE WITH ABGIL.

A

3

2

1

## REVISIONS

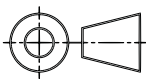

REV	DESCRIPTION	ECN'S	DATE
A	PRODUCTION RELEASE	ECN-000163	13JAN17
A001	UPDATE TO WINC3400 FR4 LAYOUT	ECN-000566	04APR17
A002	UPDATE FIRMWARE VERSIONS IN BOM	ECN-000688	01JUN17
A003	UPDATE FIRMWARE VERSIONS IN BOM-ADDED ALTERNATE FOR L11 IN BOM	ECN-000799	06JUN17
B	UPDATE REVISION TO MATCH PRODUCTION	ECN-000962	29JUN17
C000	WSA3407 REV CHANGE TO B; SEE CORRESPONDING NOTES	ECN-002109	13OCT17
D000	PRODUCTION RELEASE OF COST SAVINGS CHANGES; SEE CORRESPONDING NOTES	ECN-002550	21NOV17
E000	UPDATED WINC MODULE	ECN-002550	21NOV17

D

C

B

ITEM	QTY	DESCRIPTION	PART NUMBER
1	1	CONTROL PCB	WSA3407

DESIGN WEIGHT lb 0.000 kg	<b>TOLERANCES</b> UNLESS OTHERWISE NOTED DIMENSIONAL TOLERANCES ARE: INCH MILLIMETER X.X ± .02 X ± .5 X.XX ± .01 X.X ± .25 X.XXX ± .005 X.XX ± .13 ANGLES ± .5 DO NOT SCALE DRAWING		 THIRD ANGLE PROJECTION ALL GD&T PER ASME Y14.5-2009		 <b>ACCESS BUSINESS GROUP</b> Access Business Group International, LLC 7575 Fulton Street East Ada, Michigan 49355 USA	
	MATERIAL SUPPLIER: N/A		TITLE / DESCRIPTION CONTROL BOARD ASSEMBLY ATMOSPHERE, SKY		DRAWING NAME: WSA3252	
	MATERIAL TYPE AND DESIGNATION: N/A NONE		MODEL NAME: WSA3252 E		MODELED BY: SOM	DRAWN BY: DMB
	COLOR AND COLOR DESIGNATION: N/A NONE		SHEET SIZE: C		SCALE: 1.000	SHEET NUMBER: 1 of 1
VOLUME 0.00 cu		AGENCY NUMBER: N/A		CREATION DATE: 13JAN17		SUPPLIER: COMPUTIME

4

3

2

1