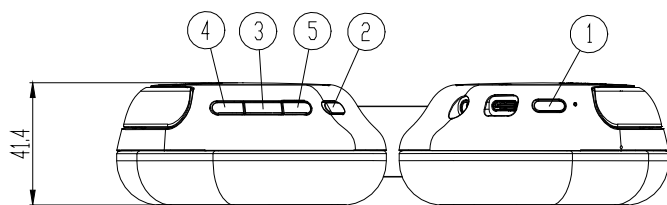
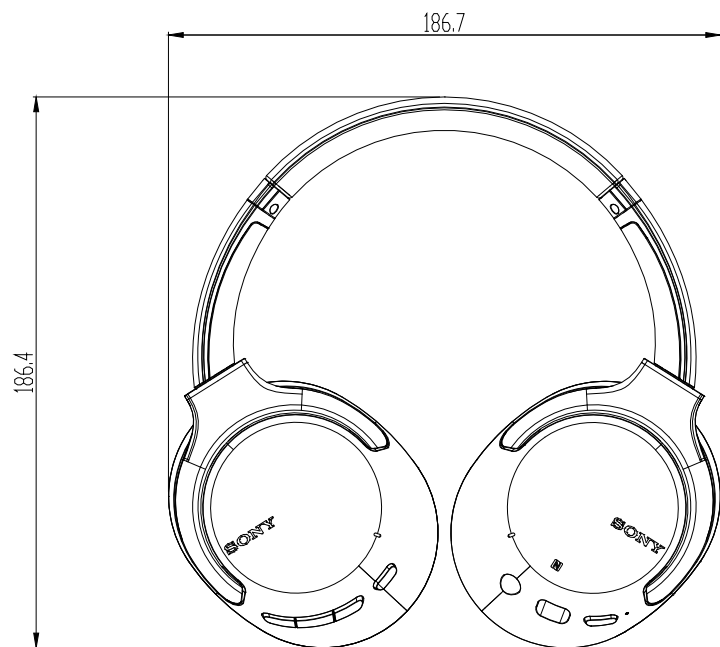
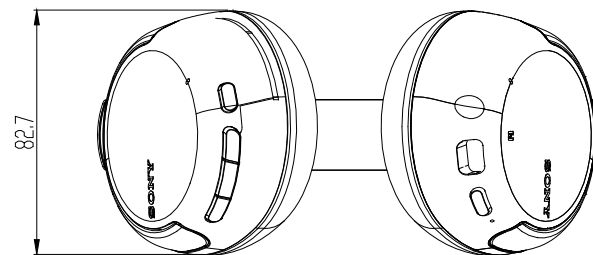


## WH-CH710N SIZE

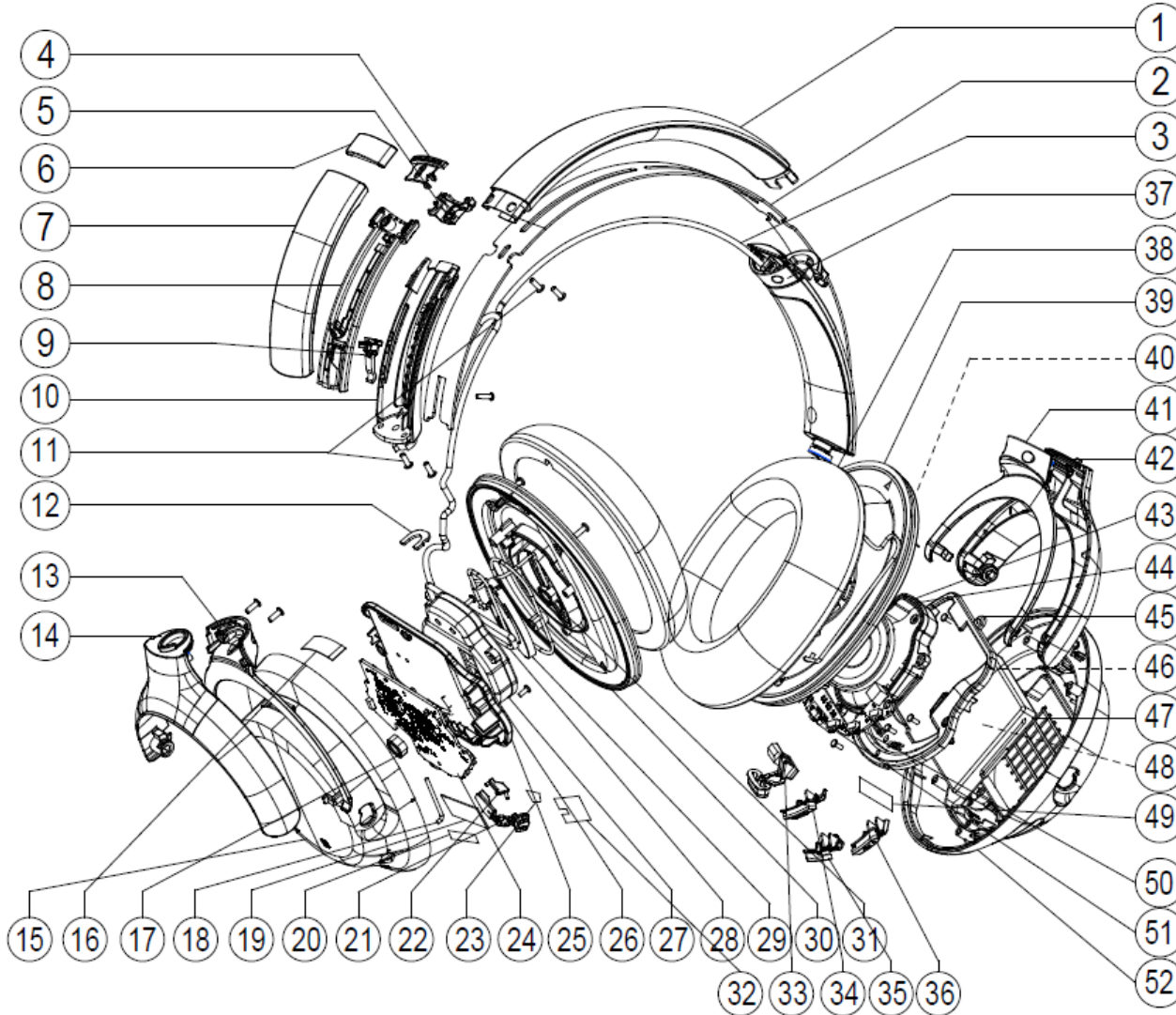


1. POWER BUTTON
2. NC BUTTON
3. MF BUTTON
4. “+” BUTTON
5. “-” BUTTON



# WH-CH710N Assembly Parts

## EXPLODED VIEW



NO	PART NAME	Qty	SPEC / COLOR
1	HEAD PAD	1	BLACK
2	STEEL BAND	1	SUS301 CSP H 0.8t / SILVER
3	WATARI CORD WIRE	1	10Pin / PVC / BLACK
4	BAND HOLDER UPPER	1	PE / BLACK
5	BAND HOLDER LOWER	1	PE / BLACK
6	BAND COVER	2	PC-ABS / BLACK
7	BODY	2	ABS / BLACK
8	SLIDER L	1	PC-ABS / BLACK
9	CLICK SPRING	2	POM / NATURAL
10	BODY COVER	2	ABS / BLACK
11	SCREW	40	Ø1.7x4.5mm / BLACK
12	C-RING	2	SUS304 0.8t / SILVER
13	HANGER COVER L	1	ABS / BLACK
14	HANGER L	1	ABS / BLACK
15	HOUSING L	1	ABS / BLACK
16	ORNAMENT DAMPER	2	MESH / BLACK
17	INC MIC_FF	2	-
18	NFC WIRE	1	TPE / WHITE
19	NFC TAG	1	-
20	NFC TAPE	1	20x6.0x0.12t
21	POWER BUTTON	1	ABS / BLACK
22	LED INDICATOR	1	확산 PC
23	LED SHEET	1	PE / BLACK
24	MAIN PCB ASSY	1	-
25	COVER L	1	ABS / BLACK
26	UNIT COVER DAMPER	2	BFN / WHITE
27	UNIT COVER L	1	ABS / BLACK
28	UNIT WIRE	2	TPE / WHITE
29	UNIT ASSY	2	Ø30
30	SPEAKER PLATE L	1	ABS / BLACK
31	NC MIC_FB	2	-
32	MAIN INSULATION TAPE	1	PE Film / 0.06t / Yellow
33	INC BUTTON	1	ABS / BLACK
34	MF BUTTON	1	ABS / BLACK
35	VOLUME MINUS	1	ABS / BLACK
36	VOLUME PLUS	1	ABS / BLACK
37	SLIDER R	1	PC-ABS / BLACK
38	EAR PAD	2	BLACK
39	SPEAKER PLATE R	1	ABS / BLACK
40	SPEAKER PLATE TUBE(220mm)	2	TPE / Ø1.0 / BLACK
41	HANGER COVER R	1	ABS / BLACK
42	HANGER R	1	ABS / BLACK
43	UNIT COVER R	1	ABS / BLACK
44	UNIT COVER TUBE(138mm)	2	TPE / Ø1.0 / BLACK
45	COVER R	1	ABS / BLACK
46	COVER TUBE(283mm)	2	TPE / Ø1.0 / BLACK
47	BATTERY	1	Li-Polymer
48	BATTERY CUSHION	1	1.0t / 양면TAPE / GREY
49	BATT PROTECTOR	1	PC / 0.3t
50	SUB PCB ASSY	1	-
51	INSULATION TAPE	2	PE Film / 0.06t / Yellow
52	HOUSING R	1	ABS / BLACK