



## External Photos of the EUT

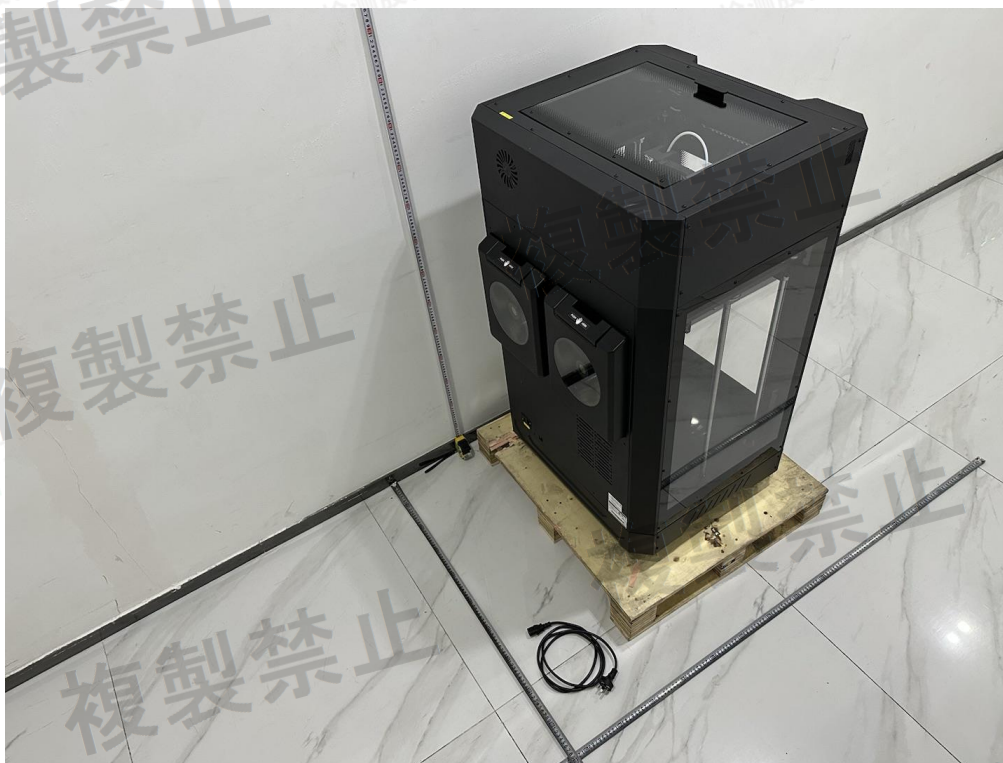


Fig. 1



Fig. 2



Shenzhen LCS Compliance Testing Laboratory Ltd.

Add: Room 101, 201, Building A and Room 301, Building C, Juji Industrial Park, Yabianxueziwei, Shajing Street,  
Bao'an District, Shenzhen, Guangdong, China

Tel: +(86) 0755-82591330 | E-mail: [webmaster@lcs-cert.com](mailto:webmaster@lcs-cert.com) | Web: [www.lcs-cert.com](http://www.lcs-cert.com)

Scan code to check authenticity

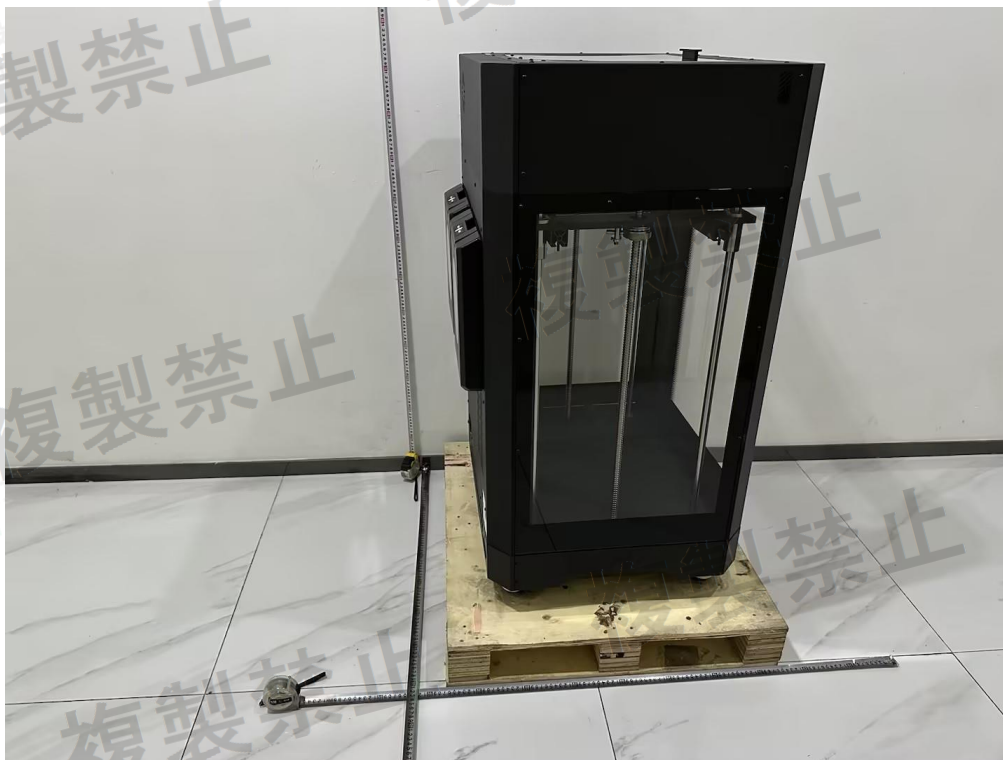


Fig. 3

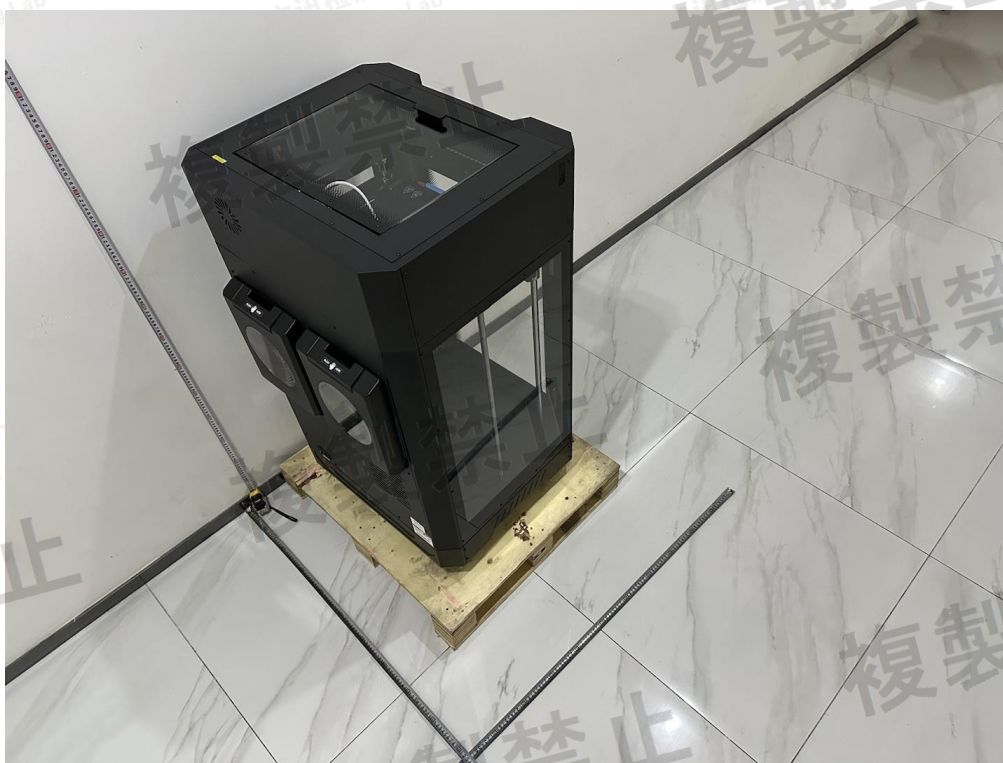


Fig. 4





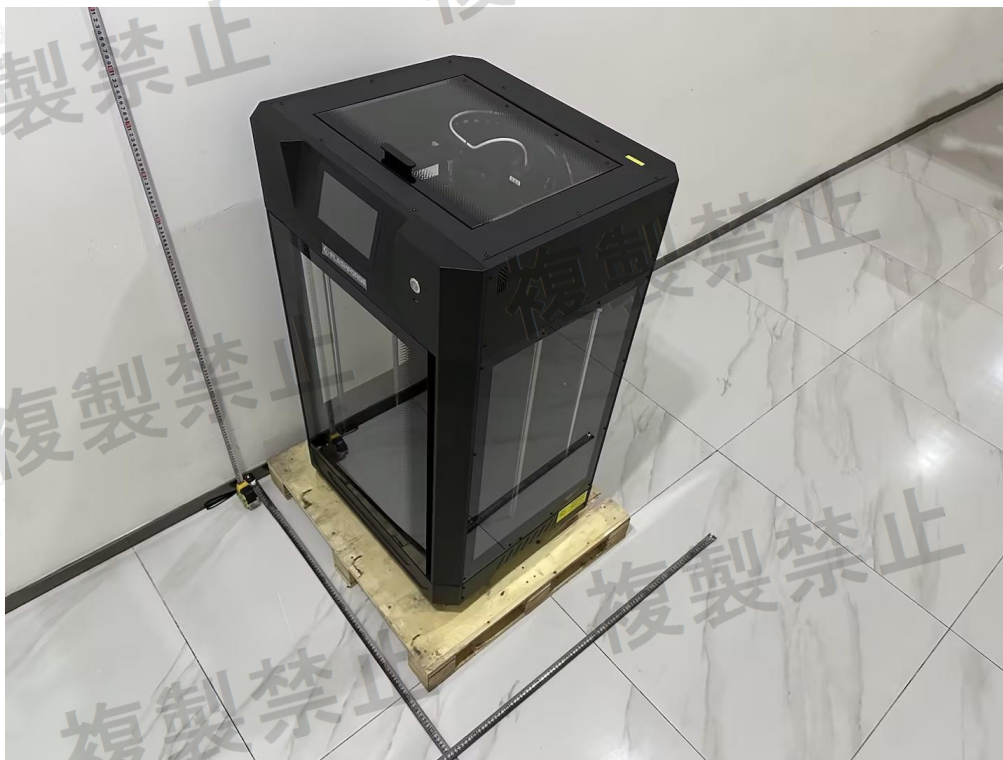


Fig. 5



Fig. 6





Fig. 7

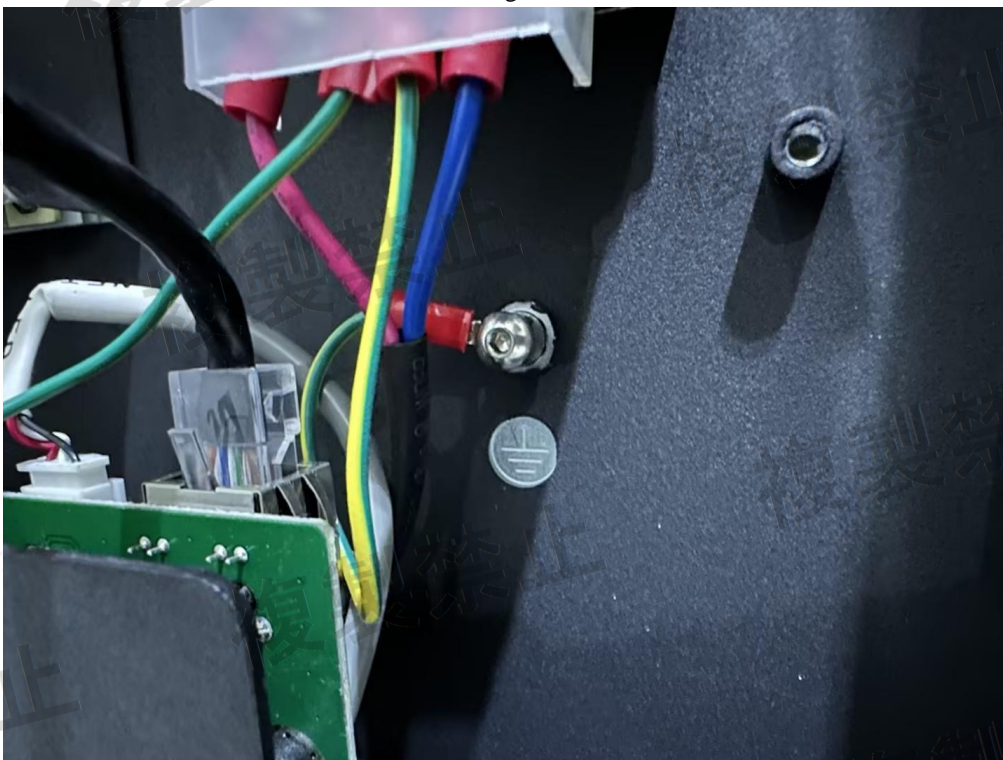


Fig. 8







Fig. 9

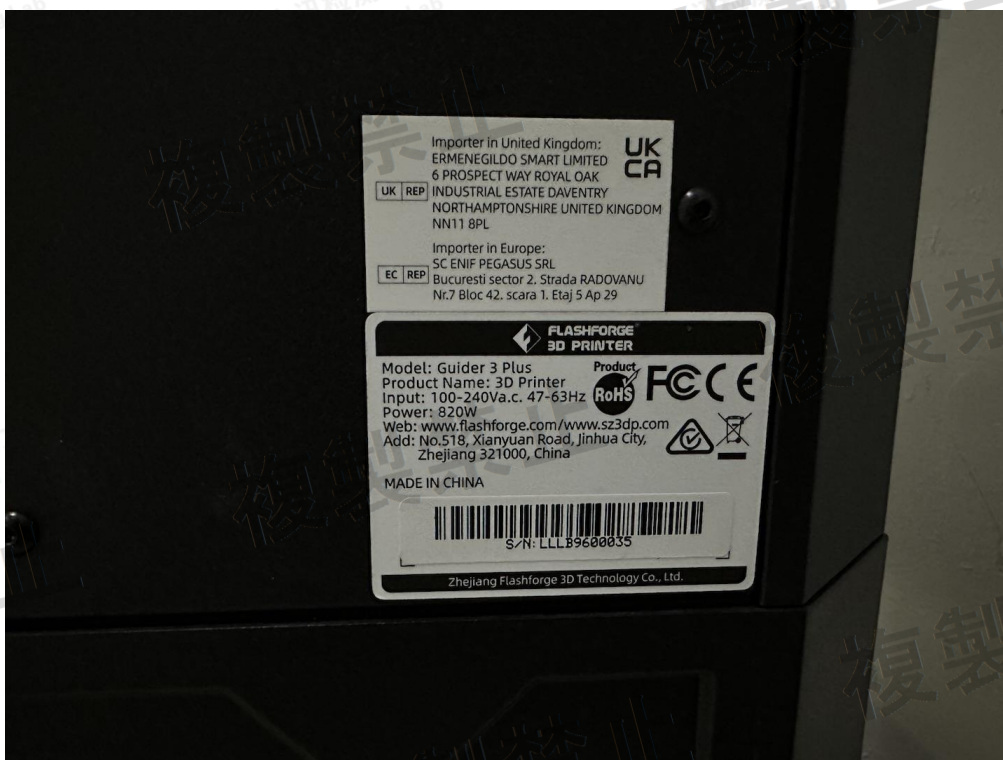


Fig. 10

