



## Internal Photos of the EUT



Fig. 1



Fig. 2





Fig. 3

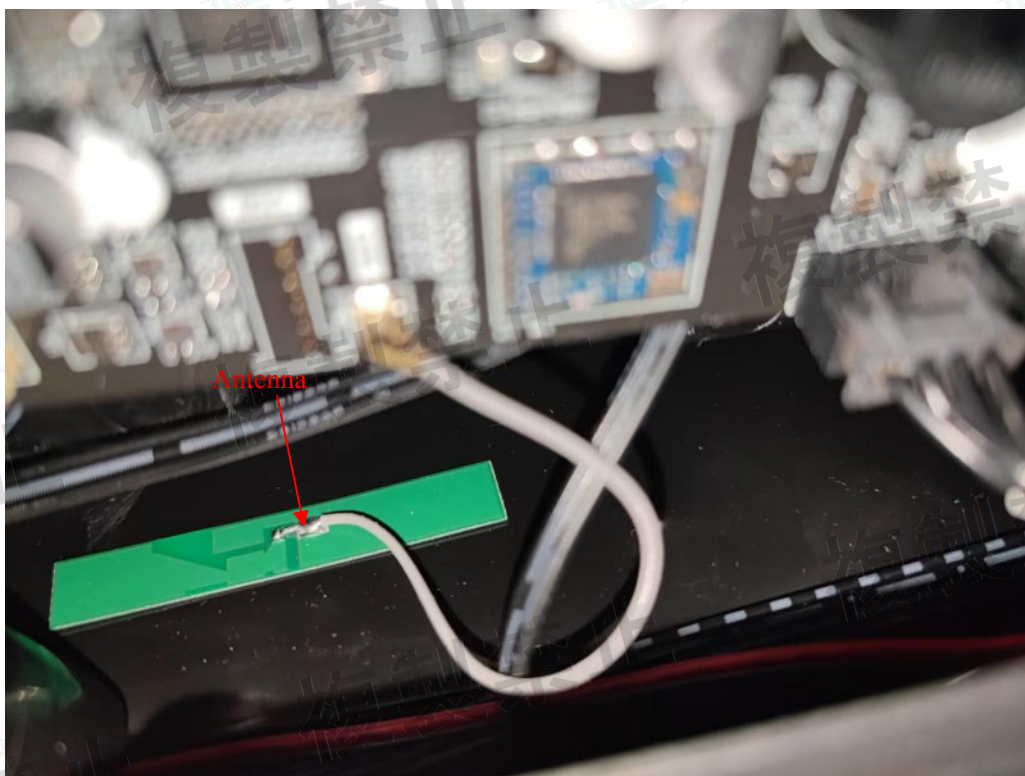


Fig. 4





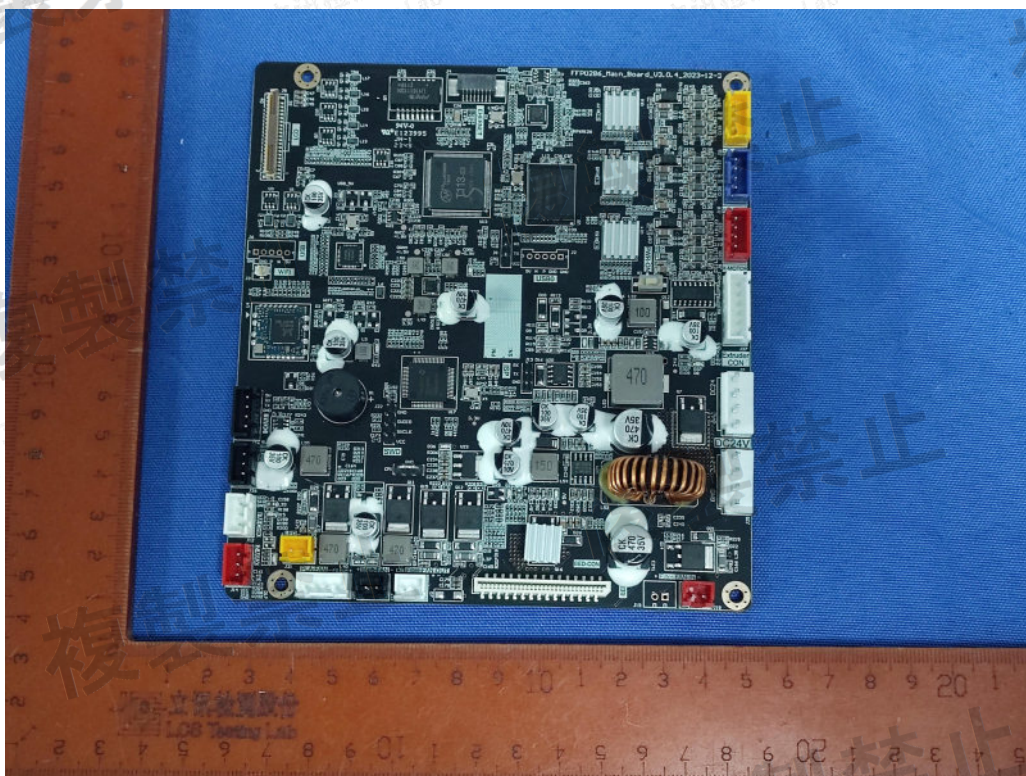


Fig. 5

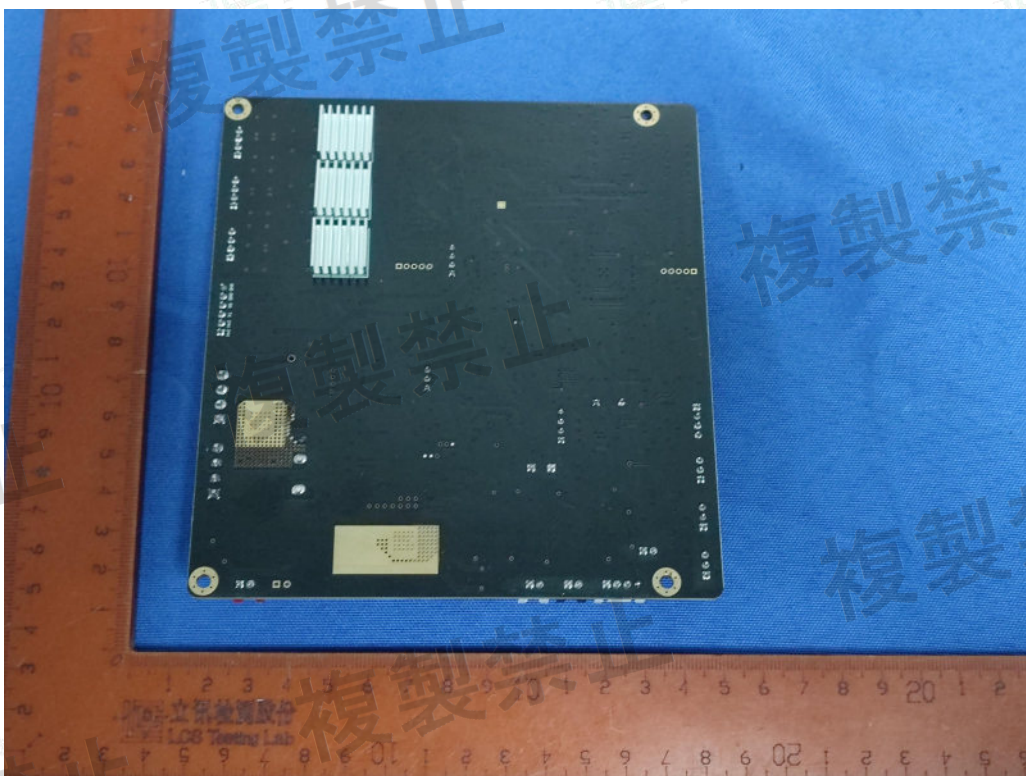


Fig. 6



Shenzhen LCS Compliance Testing Laboratory Ltd.

Add: Room 101, 201, Building A and Room 301, Building C, Juji Industrial Park, Yabianxueziwei, Shajing Street, Bao'an District, Shenzhen, Guangdong, China

Tel: +(86) 0755-82591330 | E-mail: webmaster@lcs-cert.com | Web: www.lcs-cert.com

Scan code to check authenticity



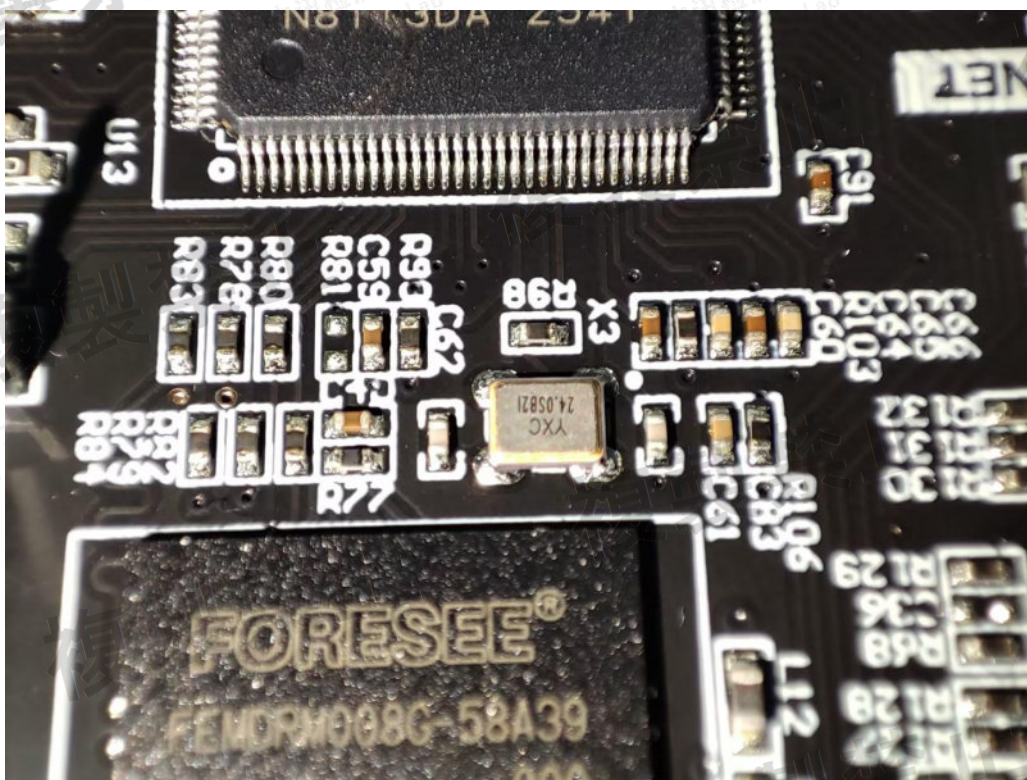


Fig. 7

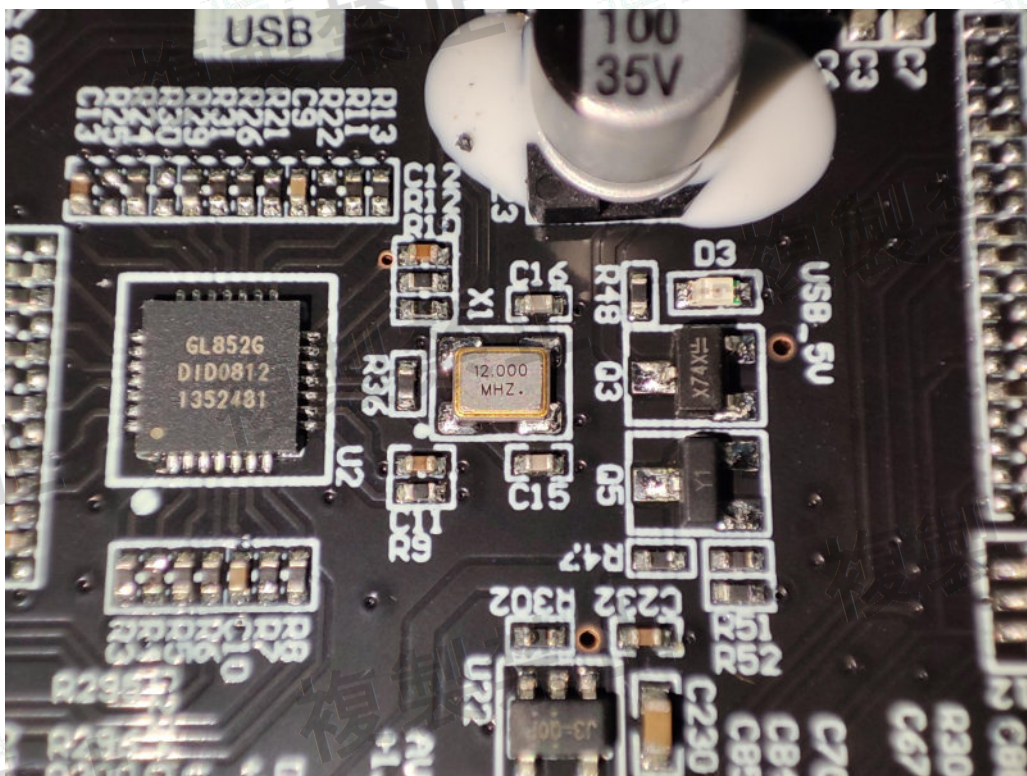


Fig. 8





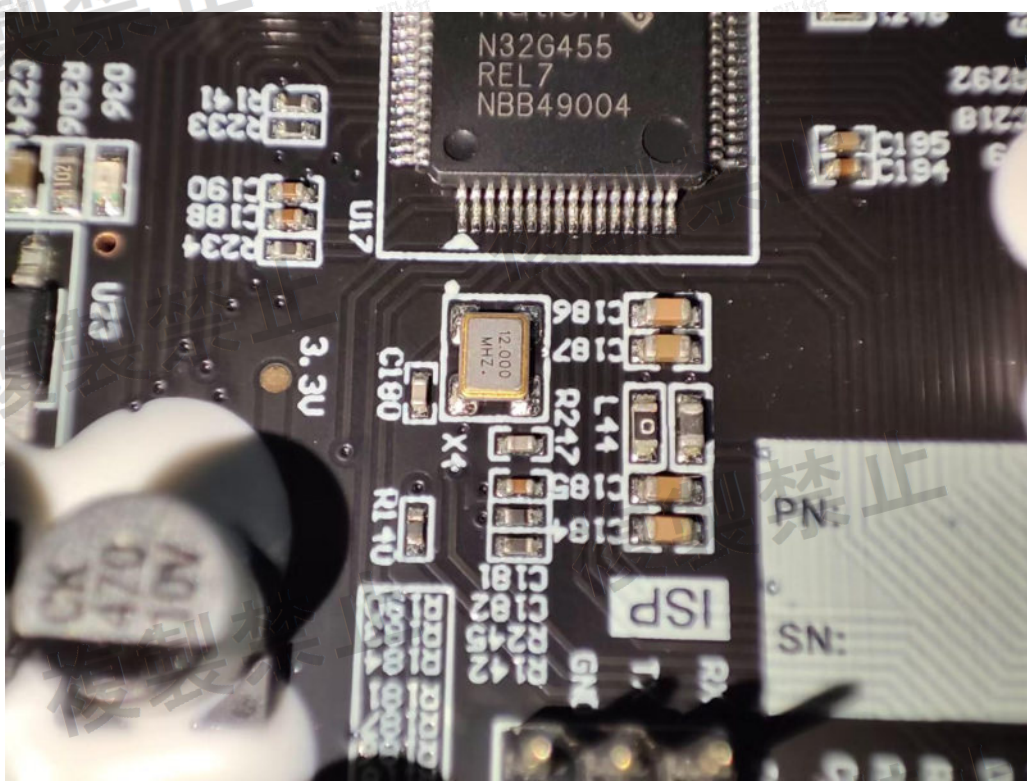


Fig. 9

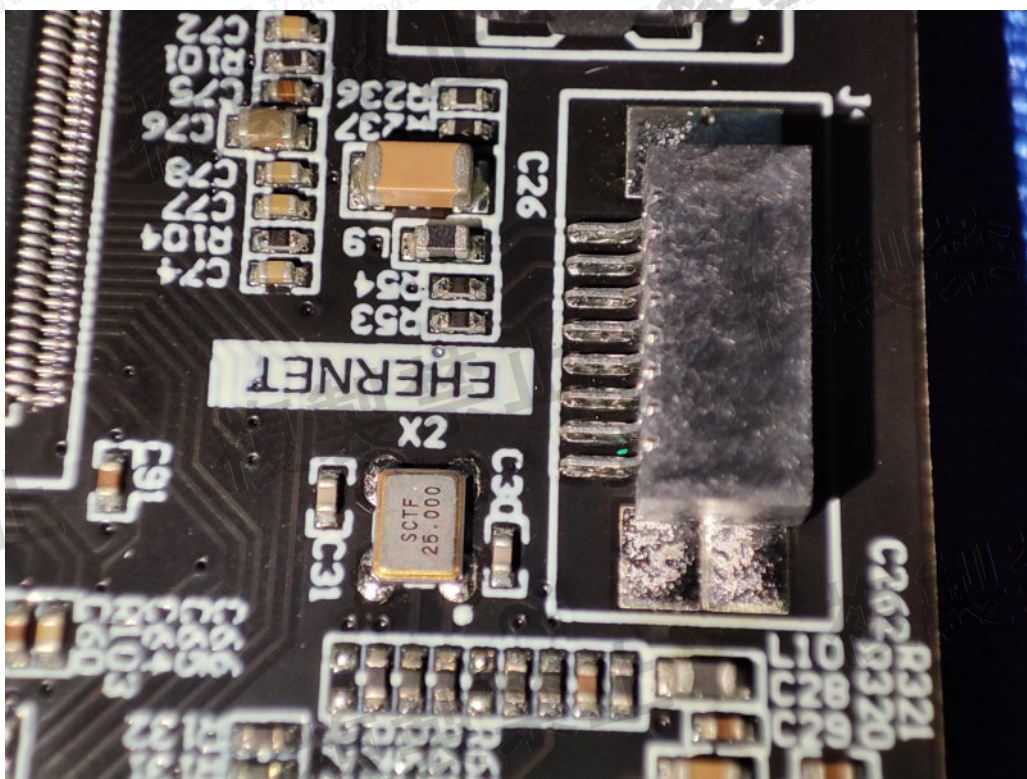


Fig. 10





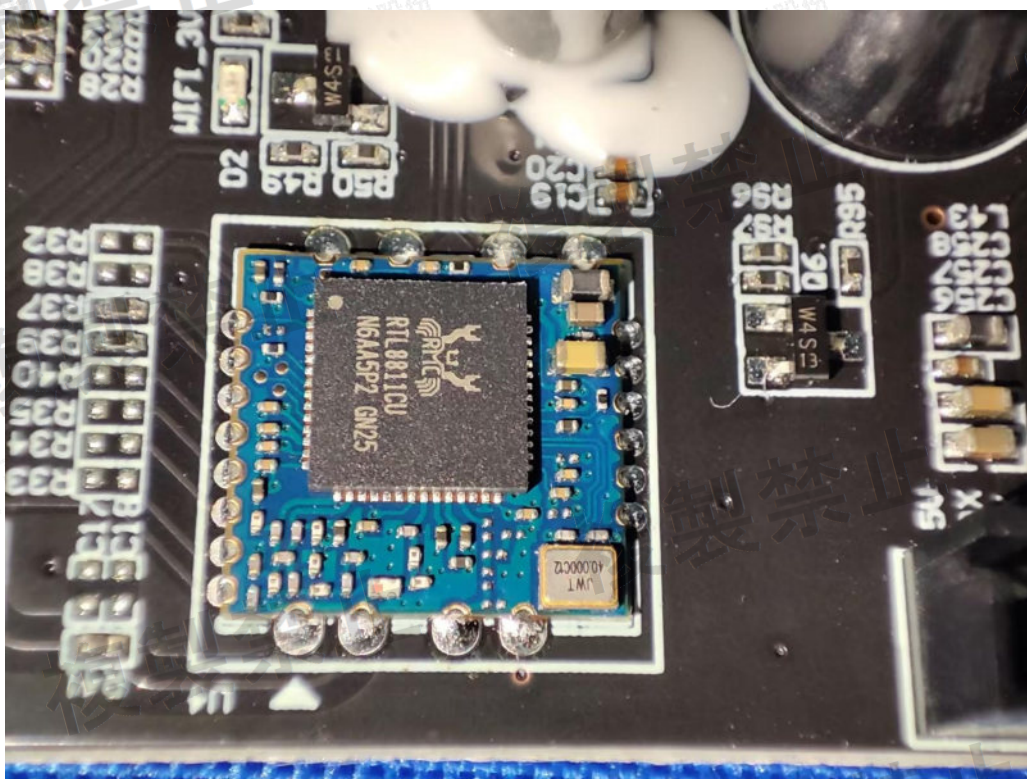


Fig. 11



Fig. 12







Fig. 14

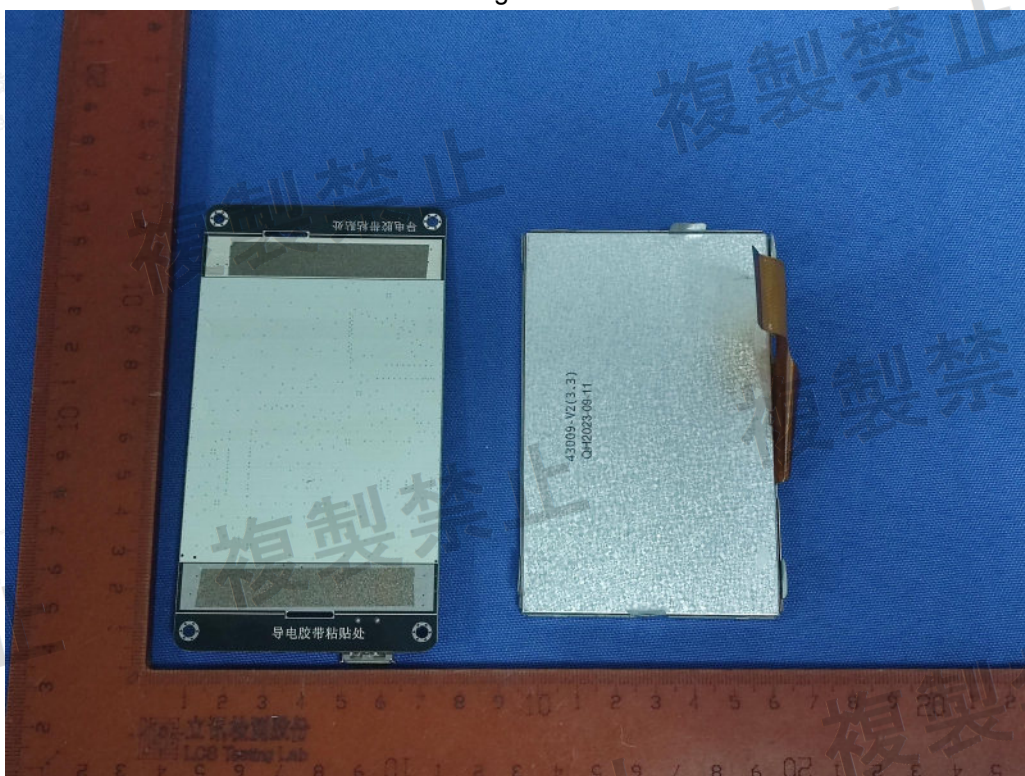


Fig. 16





Fig. 18

