

ASSEMBLY

NOTES: UNLESS OTHERWISE SPECIFIED.

2. WORKMANSHIP SHALL BE COMPLIANT WITH THE REQUIREMENTS OF IPC-A-610, CLASS 2, LATEST REVISION.

3. STAMP OR LABEL ASSEMBLY P/N: 0650-02743-03 AND SERIAL NUMBER WITH CONTRASTING COLOR INK IN THE LOCATION INDICATED. BARCODE HEIGHT SHALL BE 5 MM MINIMUM.

4. MARK THE BILL OF MATERIALS REVISION IN THE AREA SHOWN. BAG AND TAG ACCEPTABLE FOR ASSEMBLIES THAT ARE TOO SMALL OR TOO DENSE FOR STANDARD LABELING.

5. USE NO-CLEAN PROCESS. AQUEOUS CLEANING IS PROHIBITED.

6. PCB ASSEMBLIES TO BE PACKAGED TO PREVENT DAMAGE IN SHIPMENT AND HANDLING.

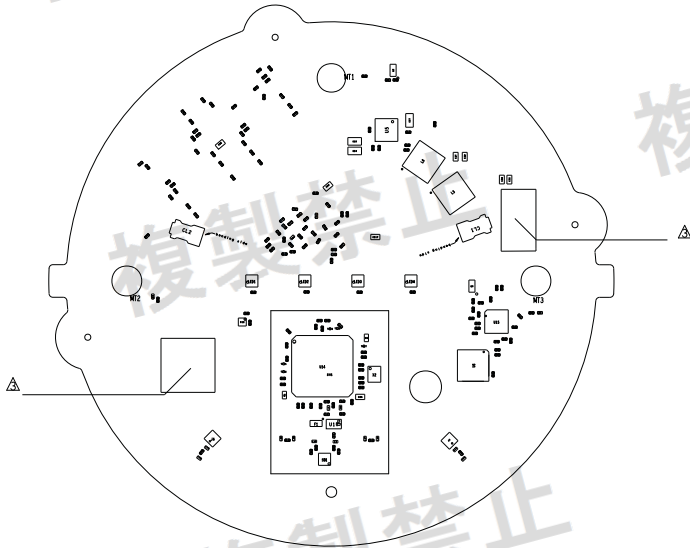
7. ESD SHIELDING PRACTICES ARE REQUIRED. ESD COMPONENTS AND ASSEMBLIES MUST BE PACKAGED IN ESD PROTECTIVE CONTAINERS. ESD SHIELDING CONTAINERS MUST BE IDENTIFIED WITH ESD WARNING LABELS.

8. THIS ASSEMBLY DRAWING MAY SHOW COMPONENT LOCATIONS THAT ARE NO-STUFF OPTIONS.

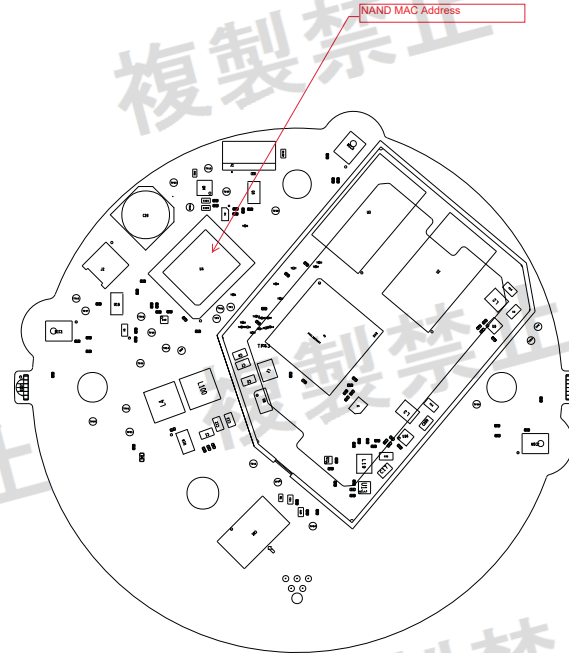
9. REFER TO THE SPECIFIC BILL OF MATERIALS (BOM) FOR COMPONENTS USED IN EACH BOARD OPTION.

10. PRINTED CIRCUIT BOARD ASSEMBLY PROCESS AND MATERIALS USED MUST BE COMPLIANT WITH THE RESTRICTION ON USE OF HAZARDOUS SUBSTANCES (RAHS) DIRECTIVE 2011/65/EU

11. SPECIAL NOTE:
ROTATION SHOWN BELOW IS CAD DATA ROTATION 0 DEGREES. PANEL IMAGES ARE ROTATED 134 DEGREES COUNTER CLOCK WISE. ASSEMBLY PLACEMENT EXTRACTS MAY REQUIRE ADJUSTMENT TO CORRECTLY PLACE COMPONENTS ON PANEL. SEE ASSEMBLY PANEL ARTWORK IN ODB+...



ASSEMBLY TOP



ASSEMBLY BOTTOM

| REVISIONS | | | | |
|-----------|--------|-------------|----------|----------|
| REV | ECO | DESCRIPTION | DATE | APPROVED |
| 01 | A07718 | EVT | 04/02/19 | MA/AY |
| | | | | |

| | | | |
|-------------|--|--------|--|
| ENGRS | | D | |
| SCALE: NONE | | 1 of 1 | |