

CONSTRUCTION PROTECTION CONFIRMATION

Limit

The high-frequency section and modulation section of the radio equipment except for the antenna system shall not be capable of being opened easily.

Confirmation Method

The EUT has shielding cover the high-frequency section except for the antenna system, the shielding can't be opened easily. Please refer the EUT photo.

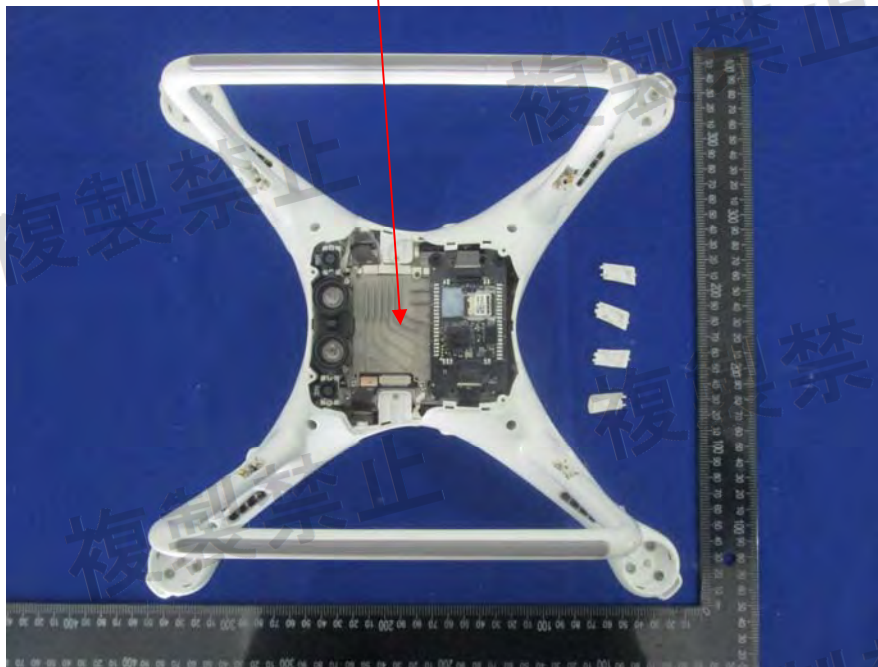


EXHIBIT A - EUT PHOTOGRAPHS

EUT –All View



EUT –Adapter Top View



EUT –Adapter Bottom View



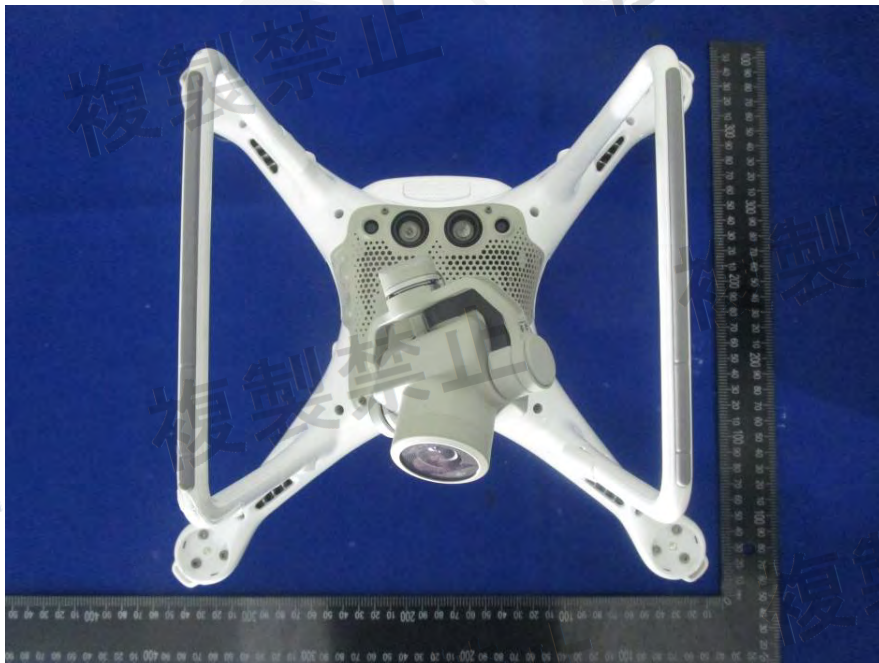
EUT –Adapter Label View



EUT –Top View



EUT –Bottom View



EUT –Side View



EUT –Side View



EUT –Side View



EUT –SideView



EUT –Port View



EUT –Uncover View



EUT –Battery Top View



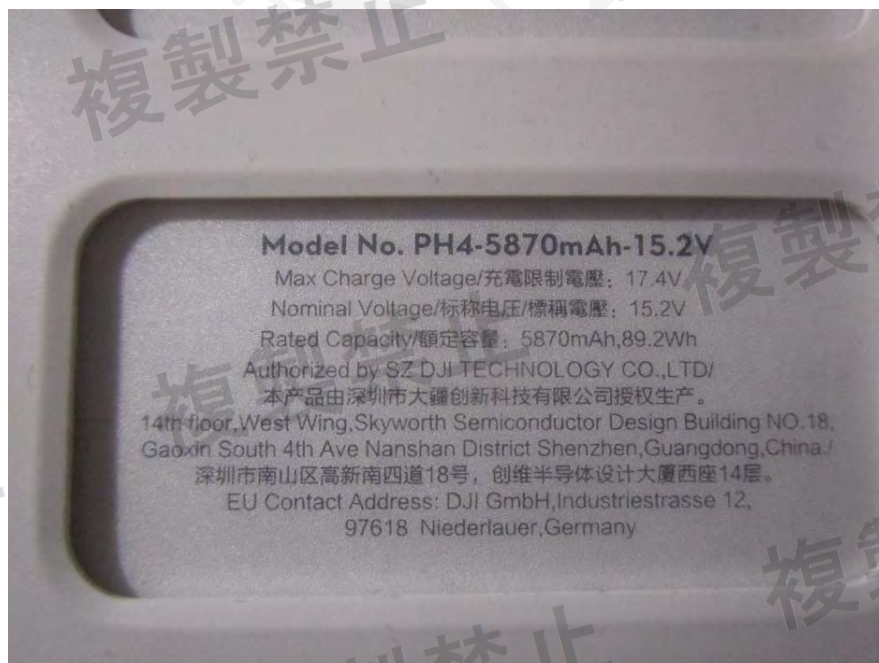
EUT –Battery Bottom View



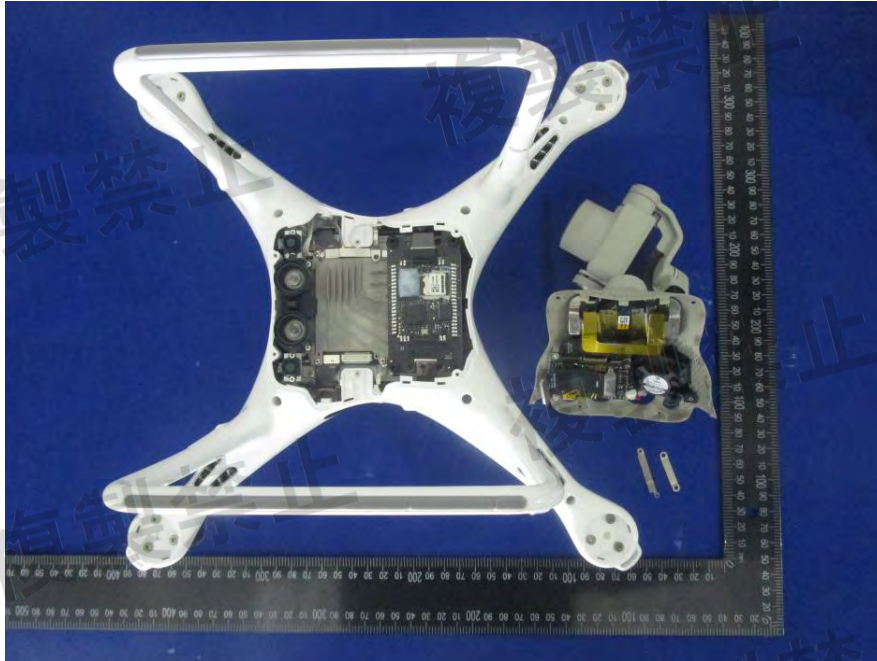
EUT –Battery Label1 View



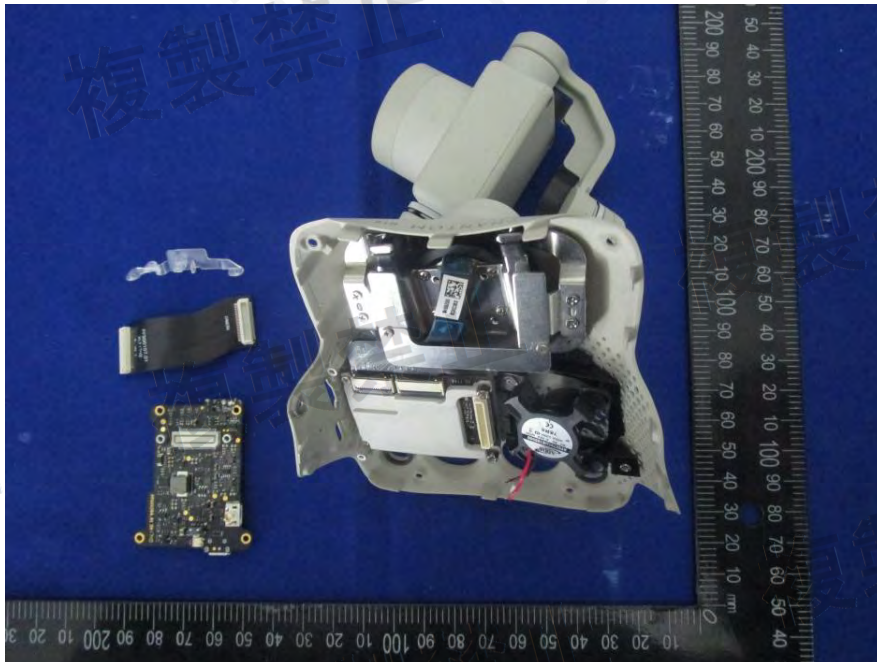
EUT –Battery Label2 View



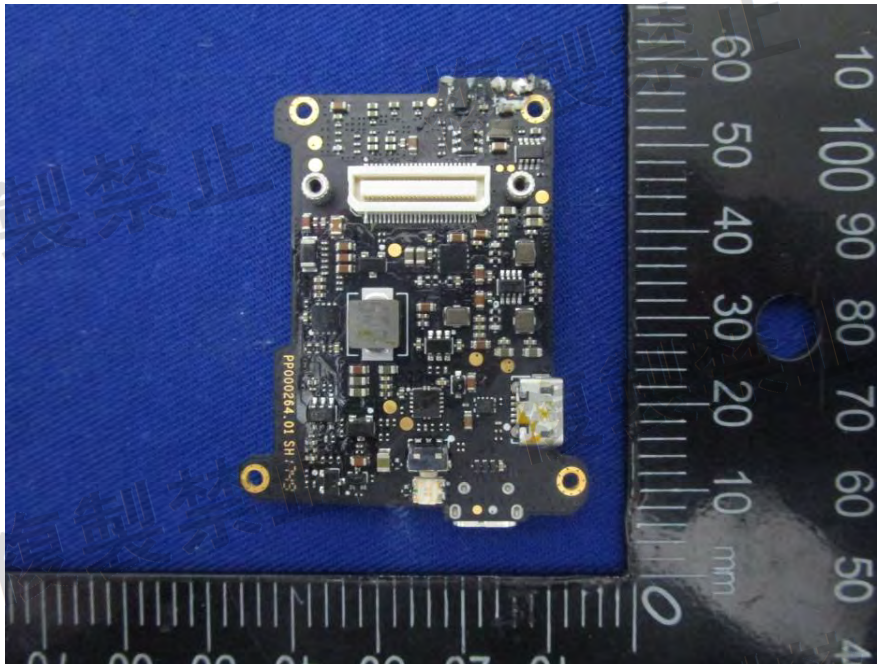
EUT –Uncover-2 View



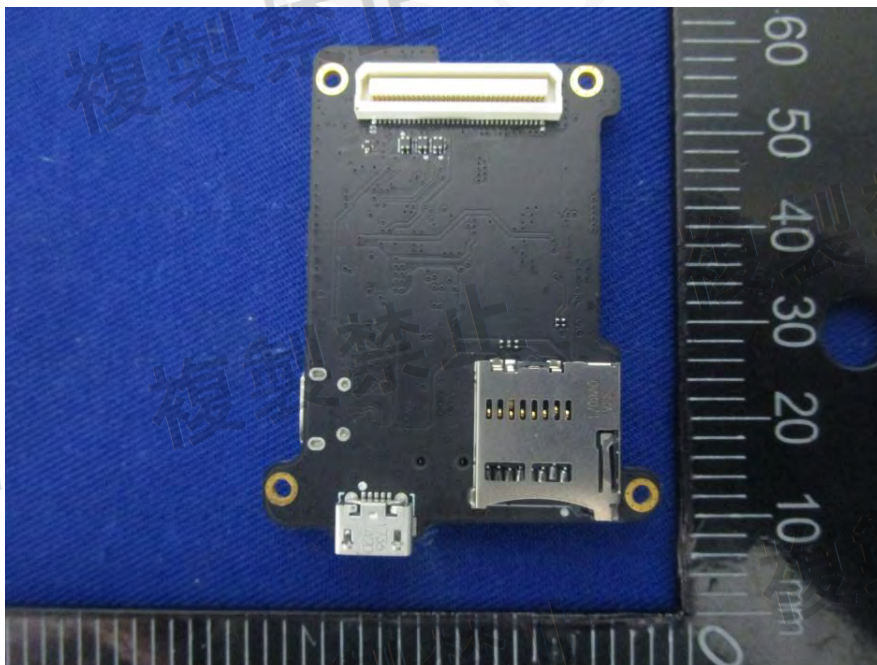
EUT –Uncover-3 View



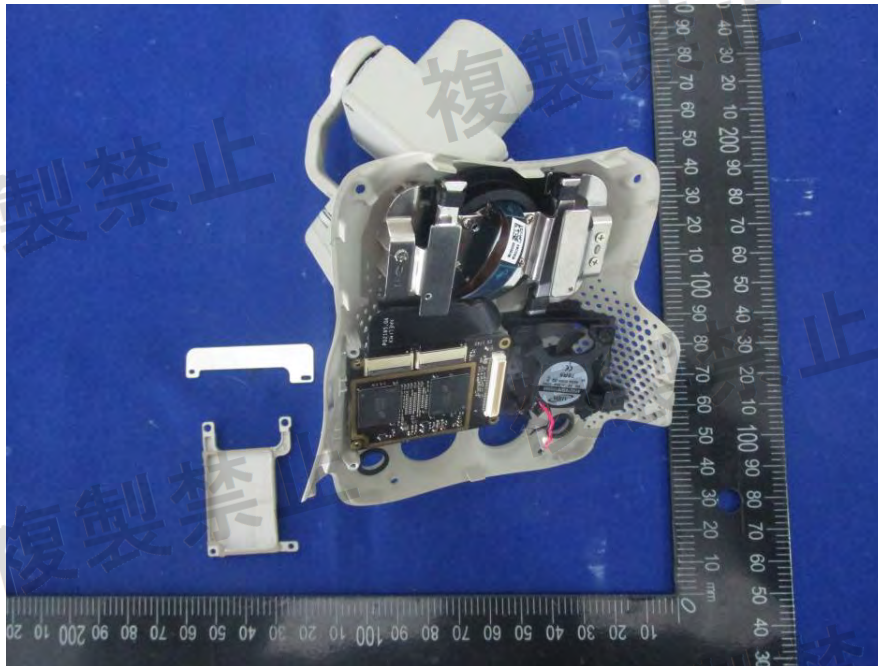
EUT –PCB1 Top View



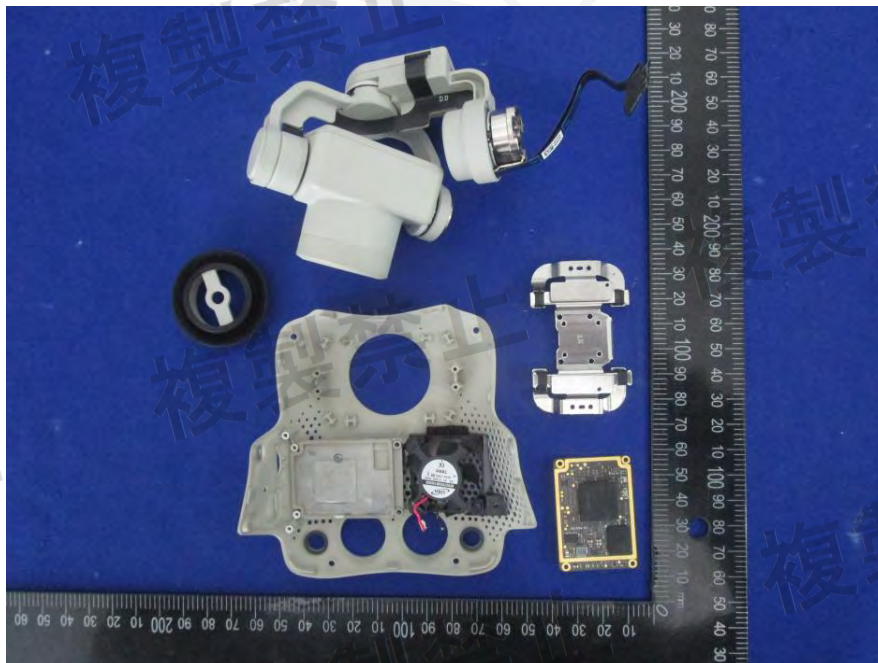
EUT –PCB2 Bottom View



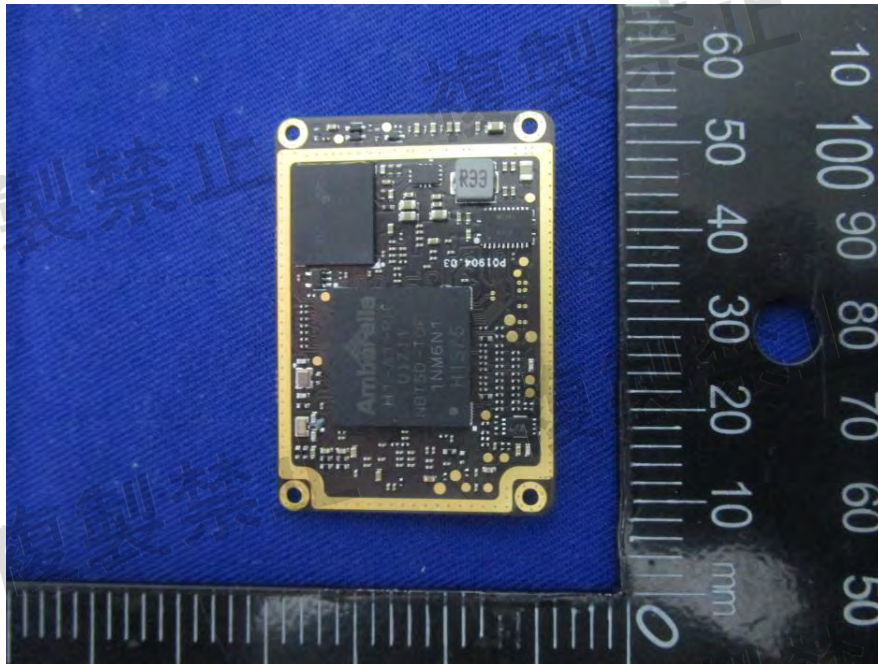
EUT –Uncover4 View



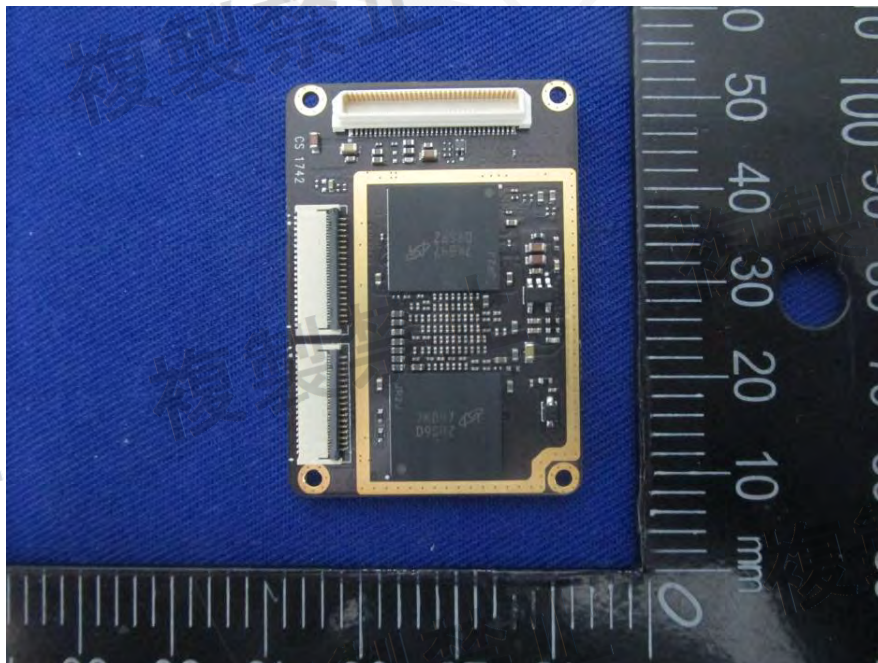
EUT –Uncover5 View



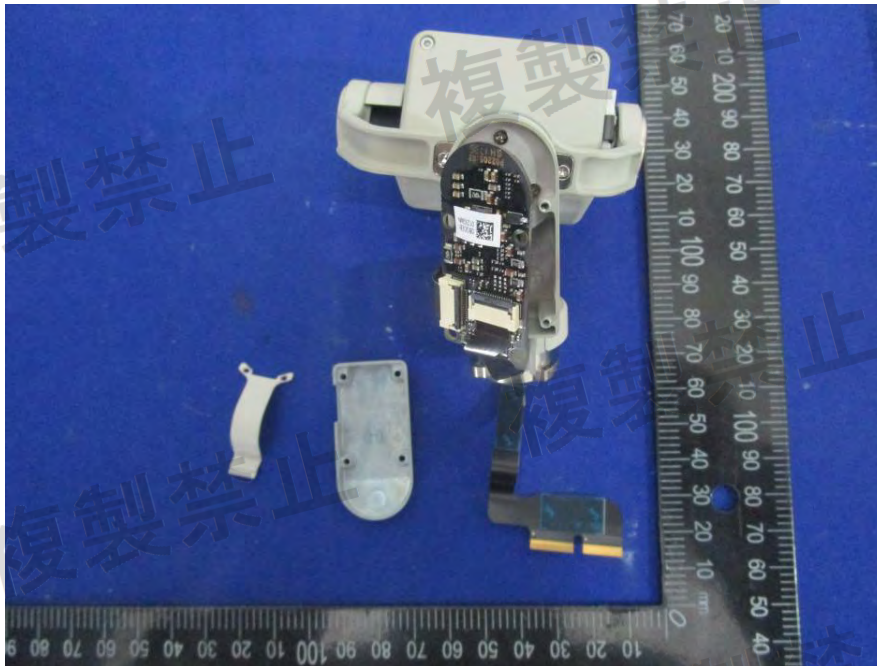
EUT –PCB2 Top View



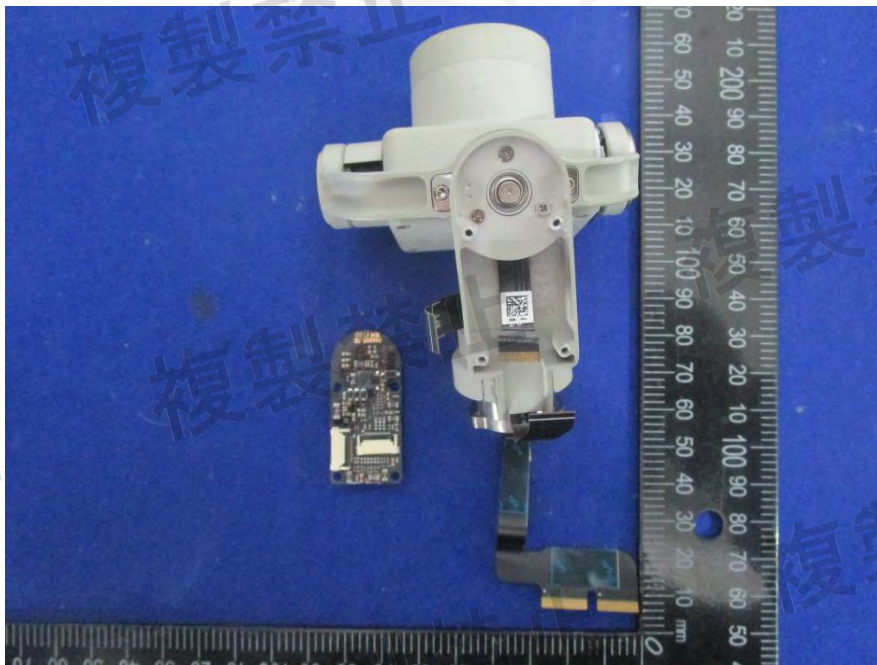
EUT –PCB2 Bottom View



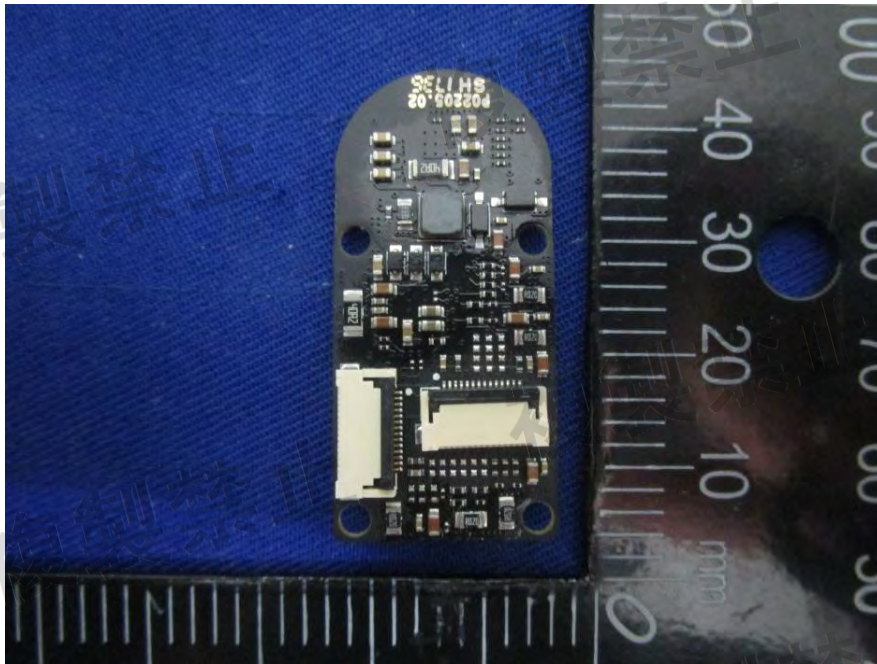
EUT –Uncover6 View



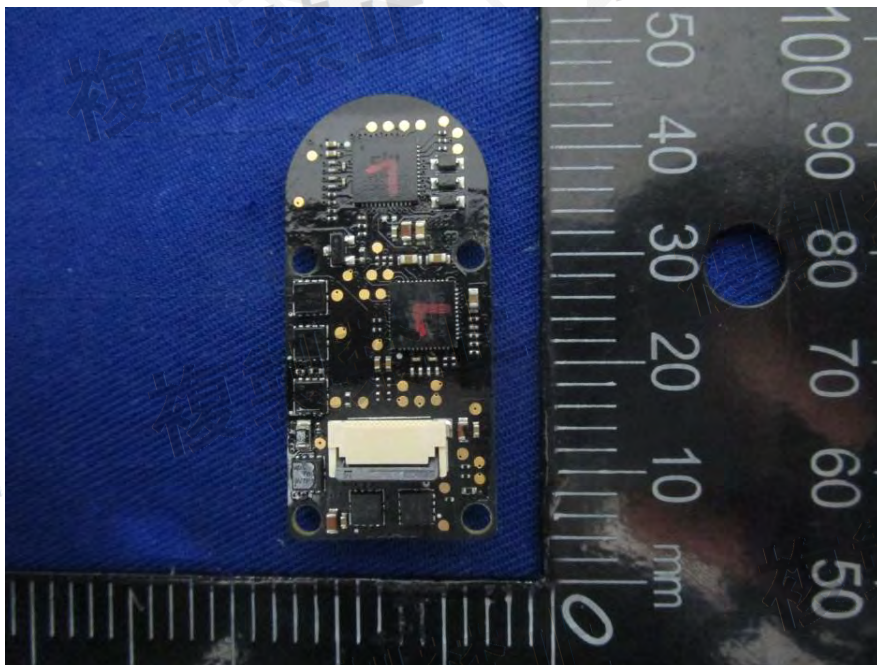
EUT –Uncover7 View



EUT –PCB3 Top View



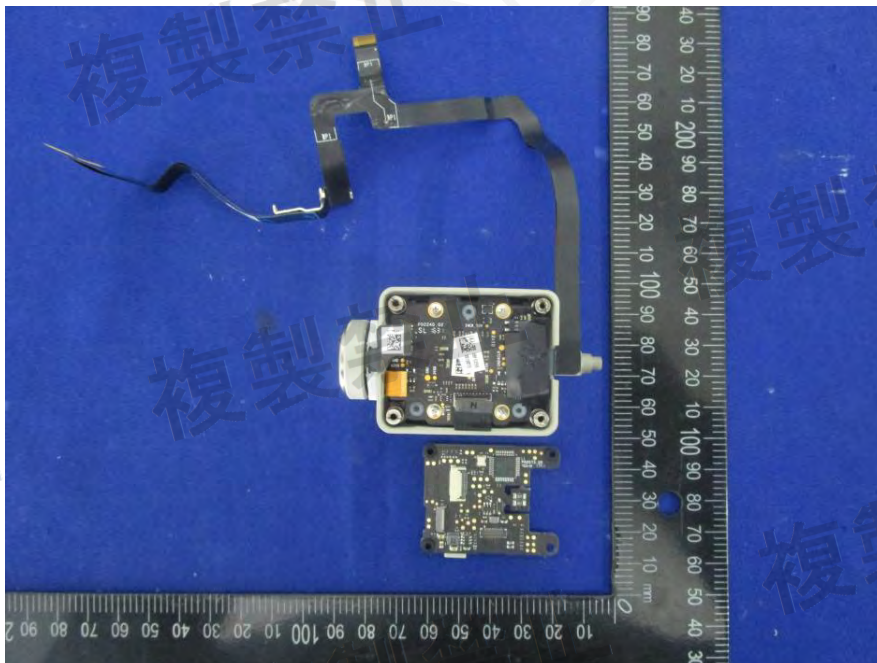
EUT –PCB3 Bottom View



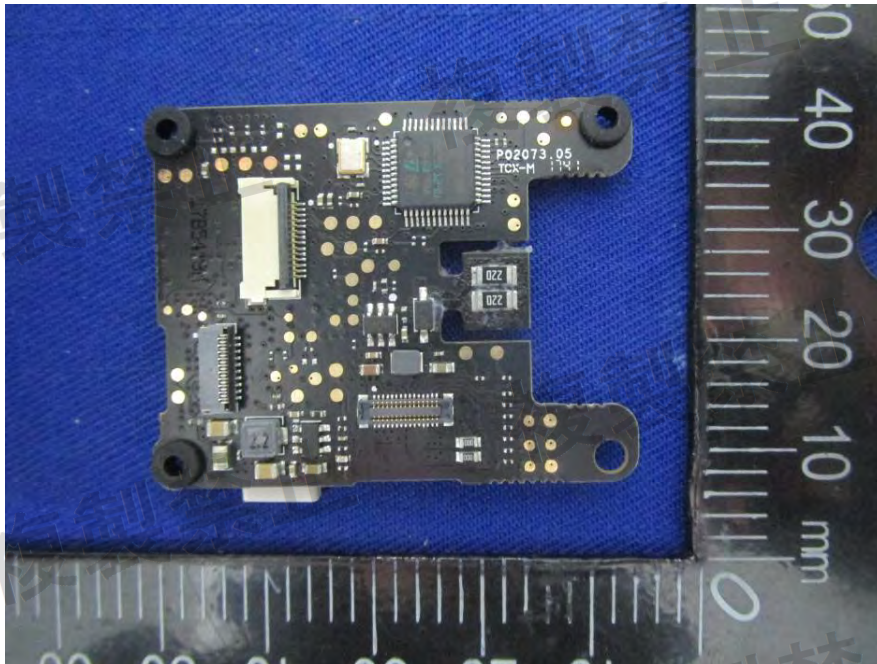
EUT – Uncover8 View



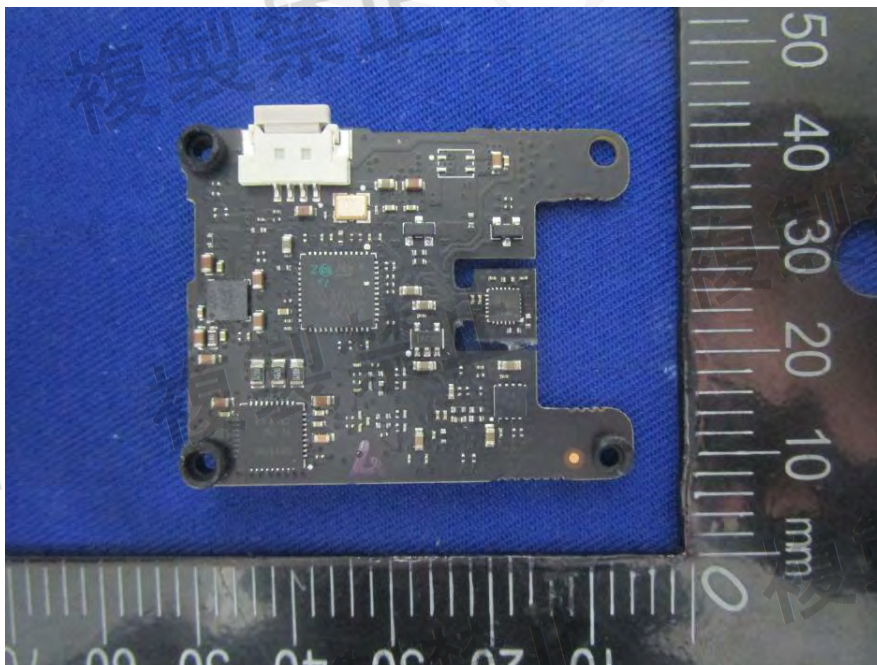
EUT –Uncover9 View



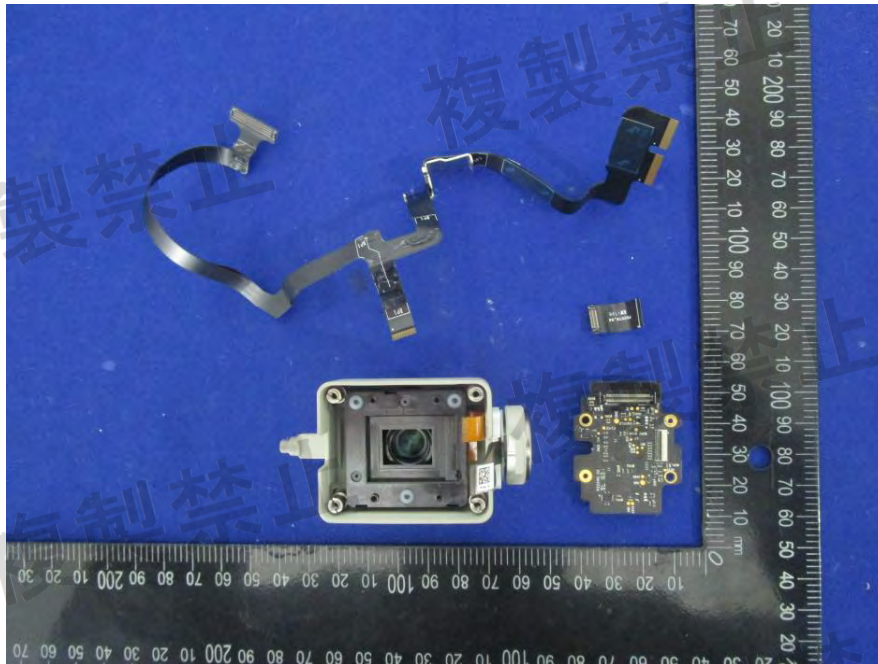
EUT –PCB-4 Top View



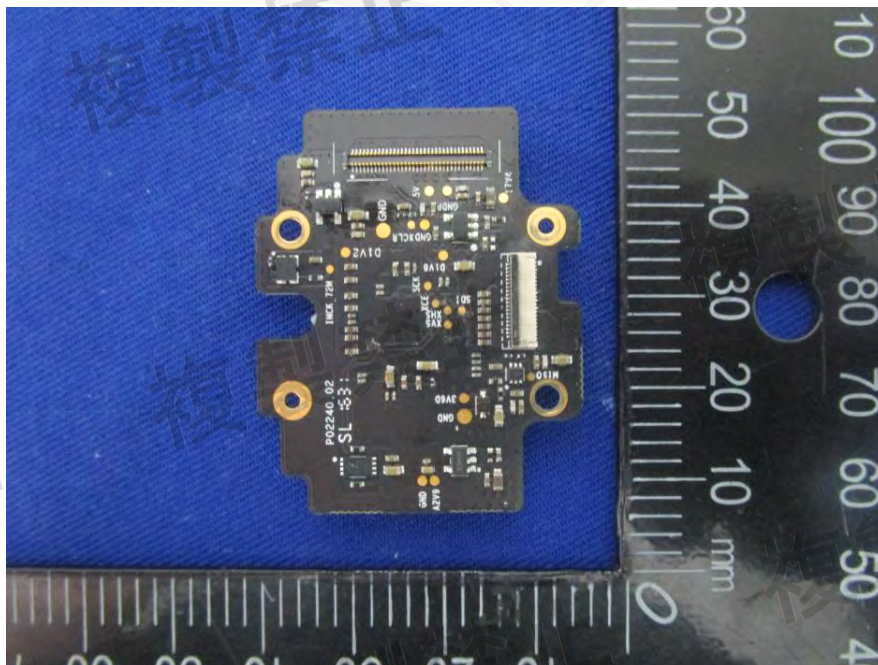
EUT –PCB-4 Bottom View



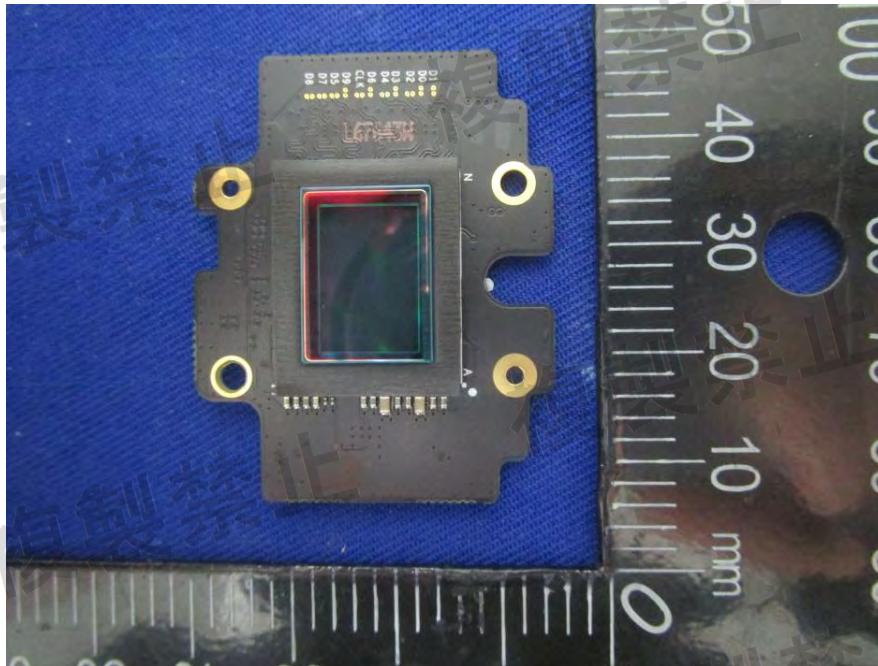
EUT –Uncover10 View



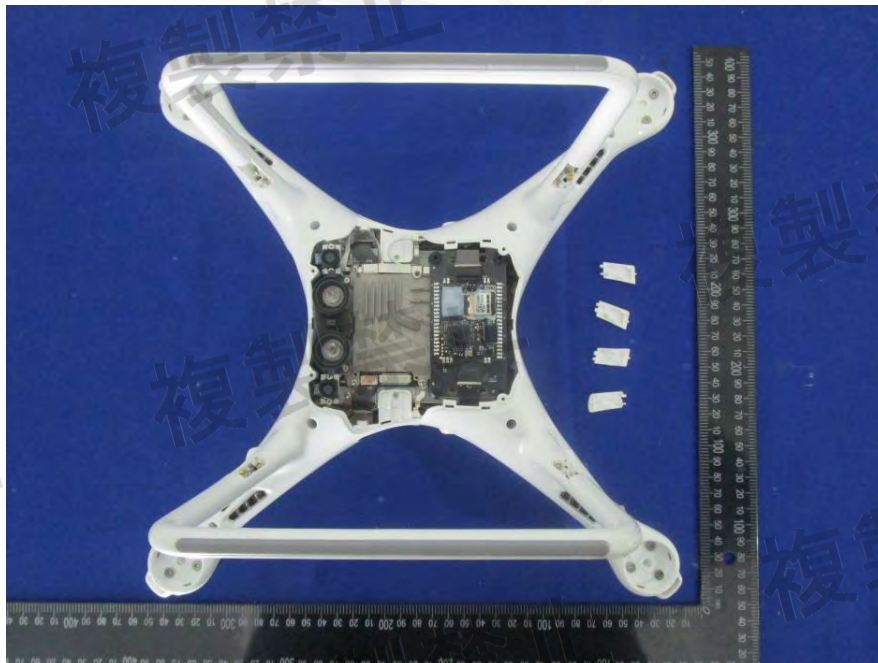
EUT –PCB5 Top View



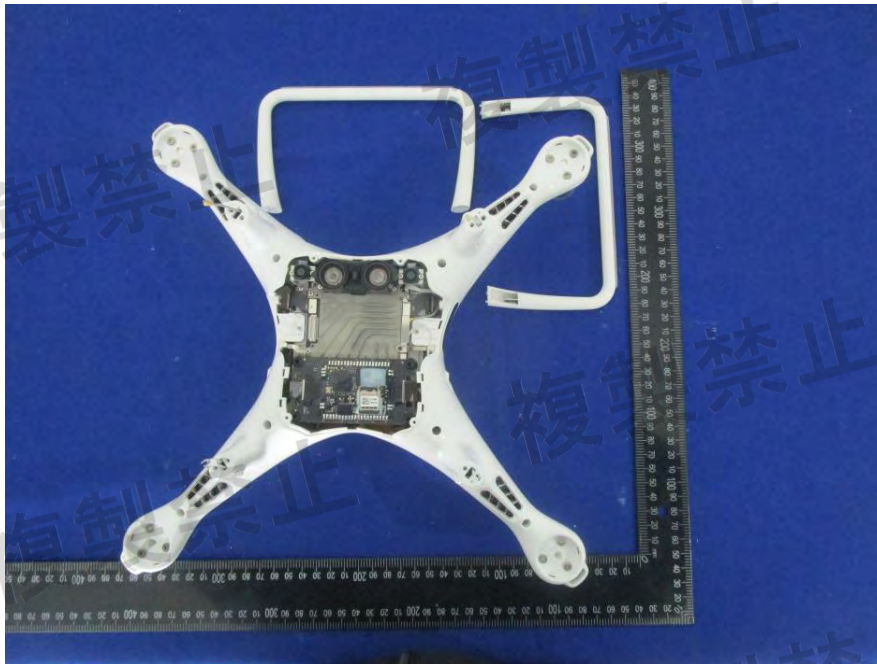
EUT –PCB5 Bottom View



EUT –Uncover11 View



EUT –Uncover12 View



EUT –Uncover13 View



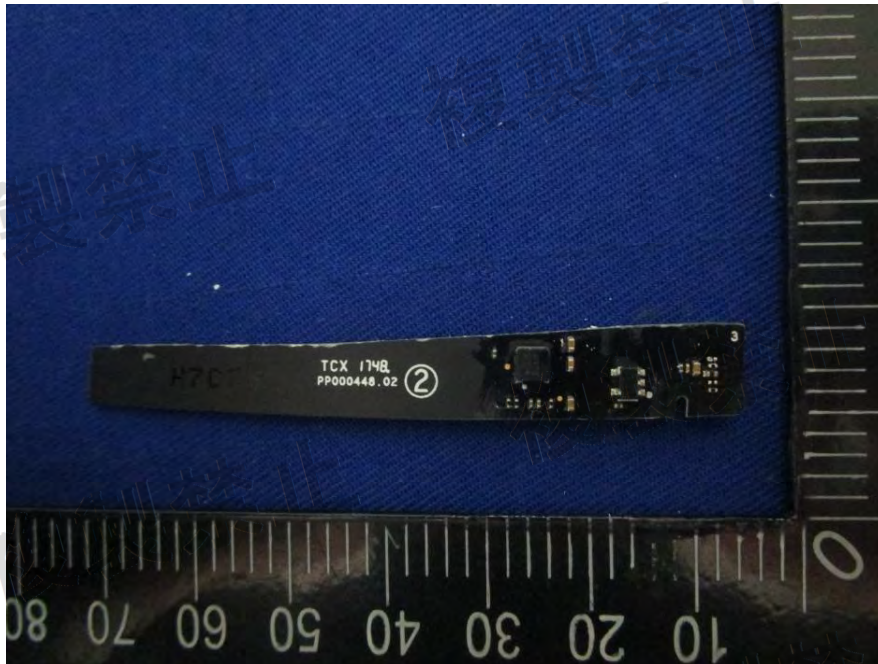
EUT –RF Ant 1 Top View



EUT –RF Ant 1 Bottom View



EUT –PCB-6 Top View



EUT –PCB-6 Bottom View



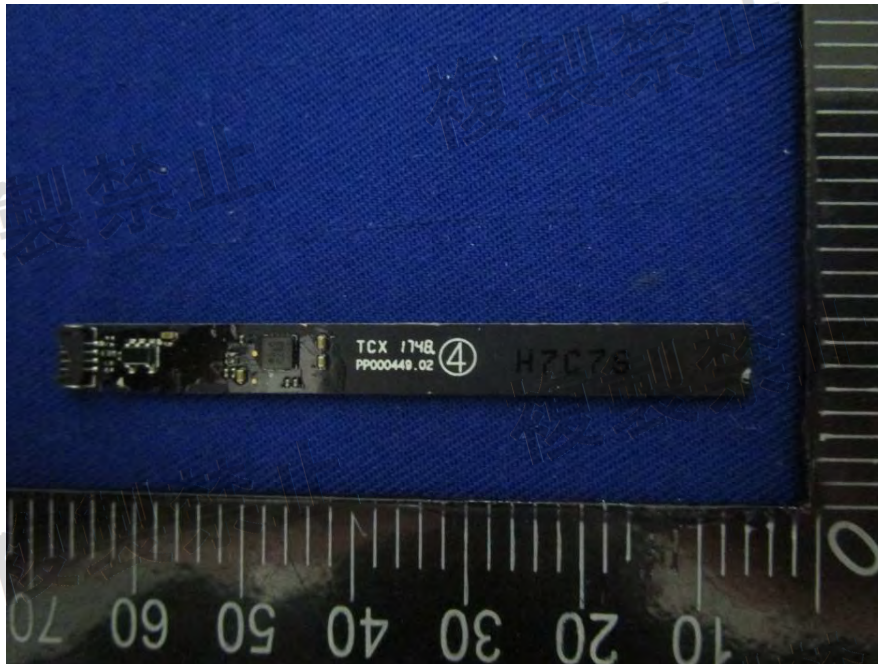
EUT –RF Ant 2 Top View



EUT –RF Ant 2 Bottom View



EUT –PCB7 Top View



EUT –PCB7 Bottom View

